



DET KONGELIGE BIBLIOTEK
MUSIKAFDELINGEN

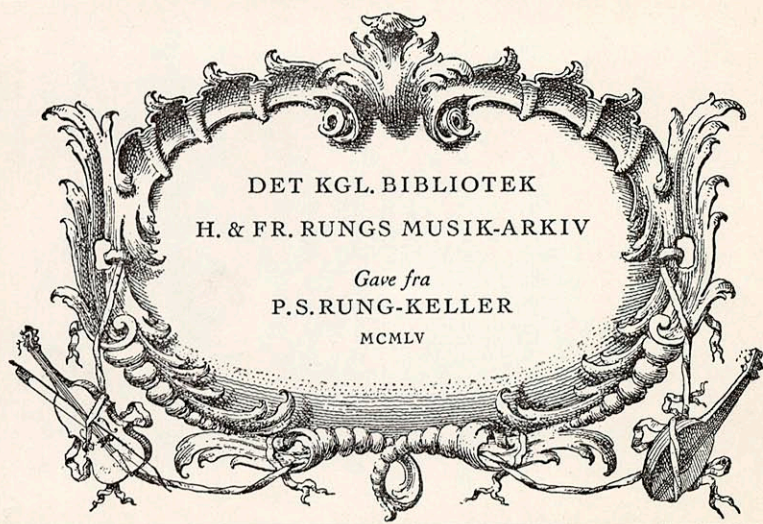
Palestrina

Missæ: *Assumpta est Maria in Coelum*
" : *Ut Re Mi Fa Sol La*

Giacomo Carissimi
al Communione
Korpartitur

H. & FR. RUNGS MUSIK-ARKIV No. 1075

(CI, 765)



1954-55. 661



Paestrina.

Missa. Assumpta est Maria in Coelum

4 Soli.

pp
Cru - ci - fi - xus

p
Cru - ci - fi -

p
Cru - ci - fi - xus Cru - ci - fi -

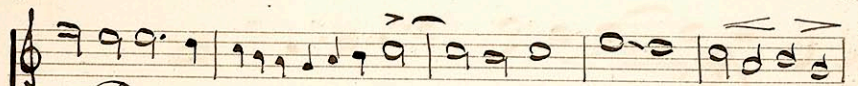
p
Cru - ci - fi -

p
e - ti - am pro no - bis sub Ponti -

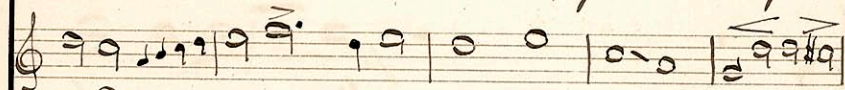
xus e - ti - am pro no - bis sub Ponti -

p
xus e - ti - am pro no - bis sub Ponti -

xus e - ti - am pro no - bis



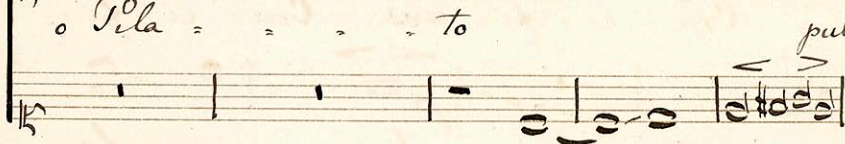
o Pila = = = = = to, passus et sepultus



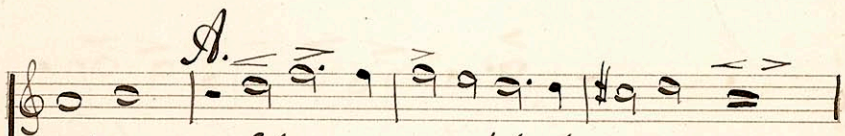
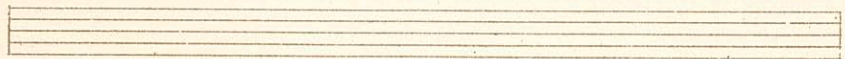
o Pila = = = = = to



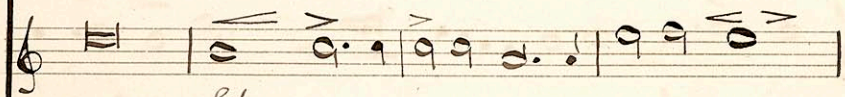
o Pila = = = = = to



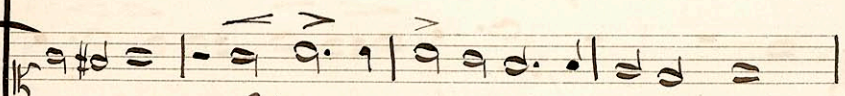
pas - sus



est - Et re-sur-rexerit terti-a di-e

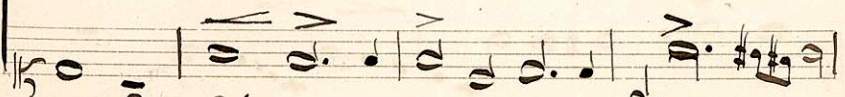


Et



tus est Et

di =



est - Et

di = =

A.



secundum scri = = = = ptu =

scri = ptu = ras, secundum scri = ptu =

secundum scri = : ptu =

secundum scri = = = ptu = ras

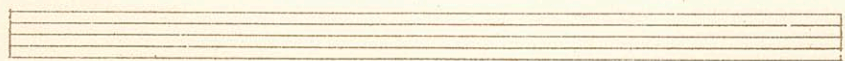
= = ras et ascendit in coe = = lum se =

ras et lum

ras se =

et ascen dit in coe =

det ad dexteram Patris et
 se-det ad dexteram Pa-tris et
 ram - ad dexteram Pa-tris et
 sedet ad dexteram Pa-tris et



B

ite rum ven-turus est cum glori a ju-dica-
 cum glori-a ju-di-ca-
 cum glori a ju-di-ca

B

re vi = = vos et mor = . . . tu.

re vi = - vos et mor = . . . - tu

re vi = = vos et mor - tu - os

re - vi - vos et mor = tu.

os cu - jus reg - ni non e - rit

os

cu jus re = qui

os cu jus re - qui non e - rit

os cu jus re - qui non e - rit

fi - nis cuius nis cuius regni non
 non e - rit fi - nis cuius regni non
 cu - jus re - gni non
 fi - nis cu - jus re -

non e - rit fi - nis non e - rit fi - nis
 erit fi - nis non e - rit fi - nis
 erit fi - nis non e - rit fi - nis
 fi - nis

rall.
rall.
rall.
rall.

Idem.

Be = ne - dic - tus qui ve = = = = =

4 Soli.

Be - ne - di - ctus qui ve = = =

= = nit qui ve = nit qui

Be - ne - di - ctus qui ve =

= = = = = nit

Be - ne - di - ctus

A.

ve = = = = nit, be =

= = = = nit be

be =

qui ve = = = = be =

A.

re = di = ctus qui ve = = = nit qui

ctus

ctus qui ve = = = nit

qui ve = = = nit

B

ve = = = = nit in

qui ve = = = = nit in

B.

dim

nomine Do = = = = mini in

ne — Do = = = = mini in

dim

no-mine Do = = = mini in

no-mine in

nomine Do = = = mini in

nomi-na Do = = = mi-ni

nomine in nomine Do = = =

nomine in nomine

Do = = = mi-ni Do

in no-mine Do =

rall dim p
= mini Do = = = mi - ni
rall dim p
Do = = = mi - ni
rall dim p
= = = mi - ni
rall dim p
= = = mi - ni

Talstrina Missa. Ut Re Mi Fa Sol La.

(LI 765)

4 Soli

p
Cru - ci - fixus e - ti - am pro no - bis
p
Cru ci - fixus e - ti am pro no - = = =