

- nūs despera - vīmūs nequāquam ultra vīnemūs neq̄ videbīmūs faciē De - i neq̄ videbīmūs faciē

ne - quāquam ultra vīde - remūs nec videbīmūs faciē

Desperavīmūs, desperavīmūs ne

Dei desperavīmūs Undique terrent ^{forni - dines} nos

De - i despera - vīmūs Undique inva dit nos

De - i desperavīmūs desperavīmūs

Solo

indigne, indigne pavore lectus et angustia
horror
Desperavi.
Indigne tre — nec nos occupat

Musical notation for the first system, including vocal staves and a basso continuo line. The key signature is one flat (Bb). The music is in a 9/8 time signature.

Quis stare poterit. quum igne devorante?
Quis stare poterit quum ar =

Musical notation for the second system, including vocal staves and a basso continuo line. The key signature remains one flat (Bb). The music continues in a 9/8 time signature.

Solo

Quare non sumtus in utero mortui? cur, cur a-

donibus sempiternis quare quare excepti quibus

This system contains the first two systems of a musical score. The top staff is a vocal line in G major, starting with a *Solo* marking. The second staff is a piano accompaniment line in G major, with rests in the first four measures. The lyrics *Quare non sumtus in utero mortui? cur, cur a-* are written below the vocal line. The third staff is a piano accompaniment line in B-flat major, with notes and chords corresponding to the lyrics *donibus sempiternis quare quare excepti quibus*. The bottom staff is a piano accompaniment line in B-flat major, with notes and chords.

beribus lactati Quare miseris data es vite?

beribus lactati cur non ab utero transtati ad tumulum quare data es vita his

This system contains the second two systems of a musical score. The top staff is a vocal line in G major, with lyrics *beribus lactati Quare miseris data es vite?*. The second staff is a piano accompaniment line in G major, with notes and chords. The third staff is a piano accompaniment line in B-flat major, with notes and chords corresponding to the lyrics *beribus lactati cur non ab utero transtati ad tumulum quare data es vita his*. The bottom staff is a piano accompaniment line in B-flat major, with notes and chords.

Tutti

heui heee heee hee nos miseros hee hee dolentes

hee hee nos miseris hee hee hee do-

qui in amaritudine animasunt hee hee do-

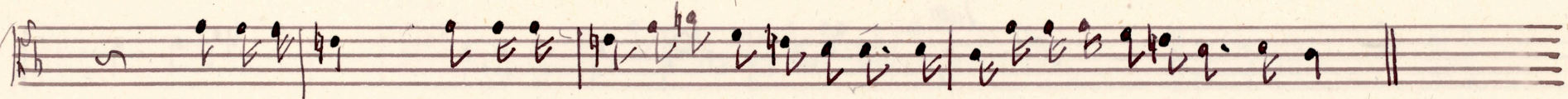
Detailed description: This system contains four staves. The top staff is a vocal line starting with a rest followed by a melodic phrase. The second staff is another vocal line. The third staff is a basso continuo line with figured bass notation. The fourth staff is a basso continuo line with figured bass notation. The lyrics are written in cursive below the vocal staves.

hee dolen - tes pereat dies pereat dies in qua nati sumus

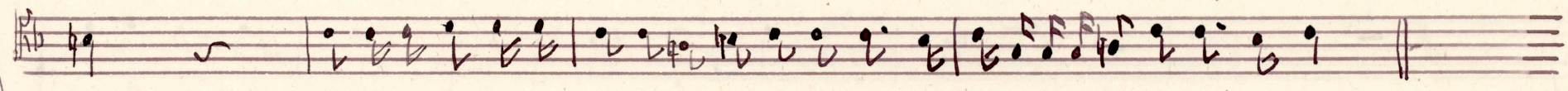
- lentes dolen - tes pereat dies pereat dies in qua nati sumus pereat

lentes dolen - tes pereat dies pereat dies in qua nati sumus

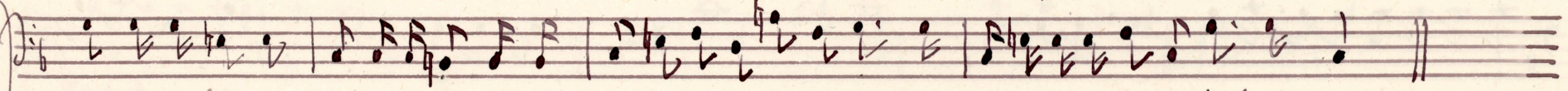
Detailed description: This system contains four staves. The top staff is a vocal line. The second staff is another vocal line. The third staff is a basso continuo line with figured bass notation. The fourth staff is a basso continuo line with figured bass notation. The lyrics are written in cursive below the vocal staves.



peneat nox peneat nox in qua concepti fuimus in qua concepti fuimus



nox peneat peneat nox, in qua concepti fuimus in qua concepti fuimus



peneat dies peneat peneat nox in qua concepti fuimus in qua concepti fuimus

