

NEUF VARIATIONS

Concertantes

Pour Guitare et Flûte

ou Violon

sur un air de Ferrari

Dédiées

à Mademoiselle G. Cayrol

par

J^{ES} VAUQUANNEURANT.

Ouvr. 5.

Prix : 5^l - 5^c

Propriété de l'Éditeur.

à PARIS, chez RICHAULT, Éditeur de Musique, Boulevard Poissonnière, N.º 16, au 1^{er}

2797. R.



GUITARE.

J. VAUQUAMEULEN. Andante.

Oeuv: 3.

1^{re} Var:

2^{me} Var:

3^{me} Var:

GUITARE.

4^{me} Var:



5^{me} Var:



6^{me} Var:



7^{me} Var:



The main musical score consists of four staves of music in G major. The first three staves feature a melodic line with eighth-note patterns and a bass line with chords. The fourth staff contains two first endings, labeled '1^{re} f.' and '2^e f.', which lead to a repeat sign.

Minore,

8^{me} Var:

The 8th variation is in G minor, marked 'Minore,'. It features a melodic line with eighth notes and a bass line with chords, ending with a double bar line.

Majeur.

9^{me} Var:

The 9th variation is in G major, marked 'Majeur.'. It features a melodic line with eighth notes and a bass line with chords, ending with a double bar line.

A musical staff with a melodic line and a bass line with chords. A forte dynamic marking 'f' is placed below the staff.

The final musical staff of the page, featuring a melodic line and a bass line with chords, ending with a double bar line.

Fine.

NEUF VARIATIONS

Concertantes

Pour Guitare et Flûte

ou Violon

sur un Air Favori

Dédiées

à Mademoiselle G. Crugolo

par

J^e VAUQUANNEULENT.

Œuvre 3.

Prix : 5^l 75^c

Propriété de l'Éditeur.

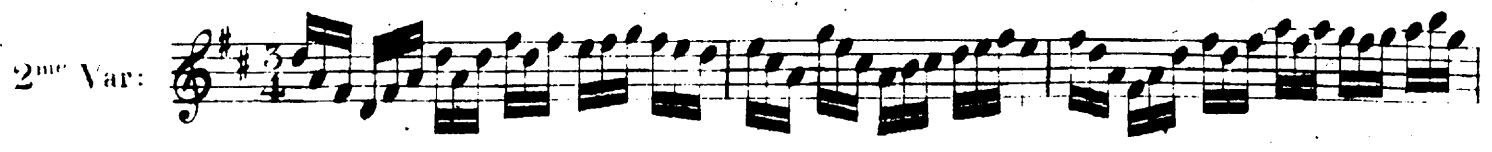
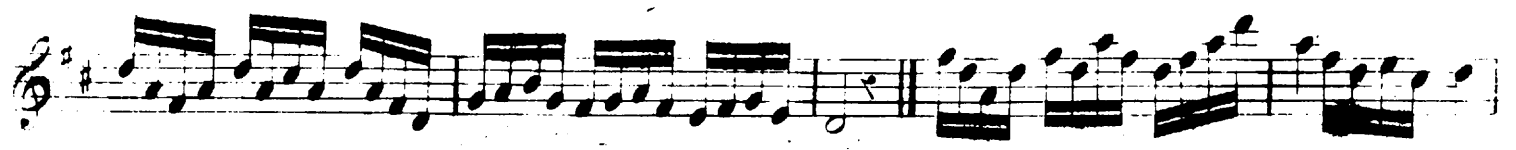
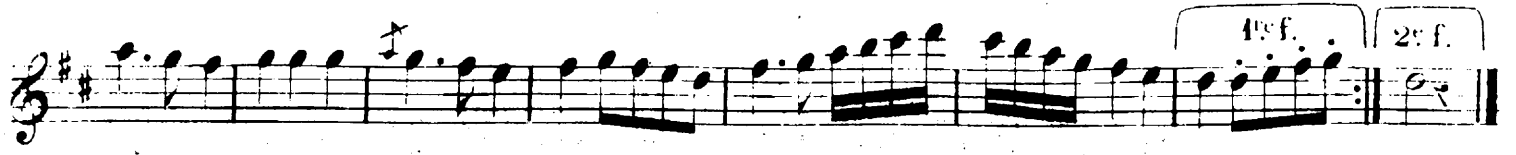
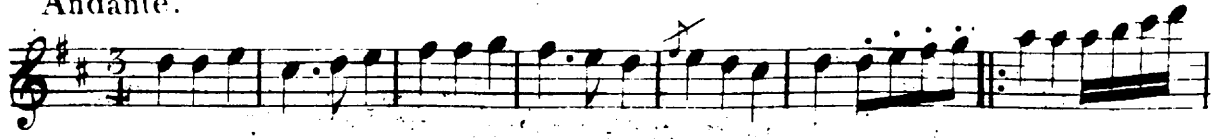
à PARIS, chez RICHAILLÉ, Éditeur de Musique, Boulevard Poissonnière, N^o 16, au 1^{er}

2797.R.

Andante.

J. VAUQUAMEULEN.

Oeu: 3.



2797. R.



mu. 8002.0210

FLÛTE.



FLÛTE.

6^{me} Var:

The first two staves of the 6th variation. The first staff begins with a treble clef, a key signature of one sharp (F#), and a 3/4 time signature. It contains a series of eighth and sixteenth notes with slurs and accents. The second staff continues the melodic line with similar rhythmic patterns.

The third staff of the 6th variation, continuing the melodic line with eighth and sixteenth notes and slurs.

The fourth staff of the 6th variation, continuing the melodic line with eighth and sixteenth notes and slurs.

The fifth staff of the 6th variation, featuring a first ending bracket labeled "1^{re} f." and a second ending bracket labeled "2^{me} f.".

7^{me} Var:

The first staff of the 7th variation, starting with a treble clef, a key signature of one sharp (F#), and a 4/4 time signature. The melody consists of quarter and eighth notes.

The second staff of the 7th variation, featuring a first ending bracket labeled "1^{re} f." and a second ending bracket labeled "2^e f.".

Mineur.

8^{me} Var:

The first staff of the 8th variation, starting with a treble clef, a key signature of two flats (Bb, Eb), and a 3/4 time signature. The melody consists of quarter and eighth notes.

FLÛTE.



Fin.