

*Allegretto.*

Romanæ  
op. 10. "Weijes Minde" (1842)

Handwritten musical notation for the first system, featuring a treble and bass staff with notes, rests, and dynamic markings like "Ped." and "x".

Handwritten musical notation for the second system, continuing the piece with similar notation and dynamic markings.

*Tenor.* *sotto voce*

Handwritten musical notation for the vocal line, starting with a rest and then a few notes.

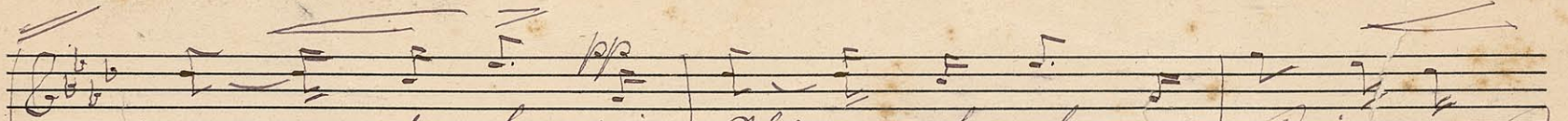
- 1. But
- 2. Bu
- 3. Et

Handwritten musical notation for the piano accompaniment of the third system, including the instruction "poco a poco rit.".

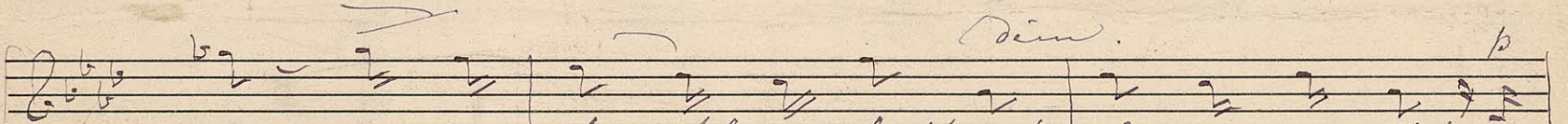
*più moderato*

- 1. non i van stem-vante kon - in Noet in
- 2. fra-ma niet i dal foga - lanta beijde, og
- 3. furete wit die kon Lee - bra-ur kon

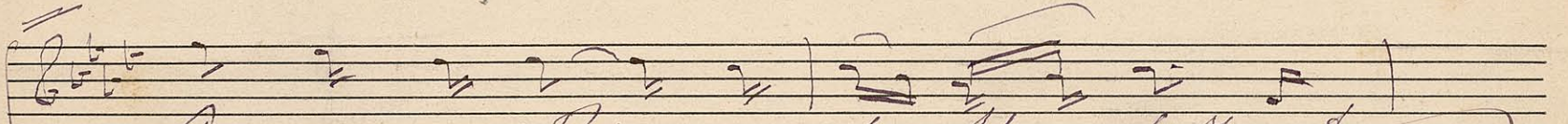
Handwritten musical notation for the piano accompaniment of the fourth system, showing a change in tempo.



1. Himmels juu lova, i Himmels juu lova, og Himmels  
 2. Jungs stertil, og Jungs stertil: til Himmels  
 3. Lo - uerend Himmels, i Lo - uerend Himmels, og Jungs stertil



1. Pri - - ge juu blus og lovt af Ju - uer juu, og  
 2. Himmels, til den ma - nne - de hjert vi lofte sig vil, til  
 3. Himmels juu juu juu juu juu i en Himmels, og



1. Himmels juu Pri - ge juu blus og lovt af  
 2. Lo - uerend Himmels, til den ma - nne - de hjert vi  
 3. Jungs stertil Himmels juu juu juu juu



~~Handwritten scribbles at the top right of the page.~~

*a piacere a piacere* Tempo lento

Musical staff with treble clef, key signature of two flats, and a melodic line.

1. Ogn' - - - un no' - - - furo.  
2. l'of - - - la dig' - - - vil.  
3. a' - - - e' - - - un' - - - furo.

Tempo lento

Musical staff with treble clef, key signature of two flats, and a melodic line. Includes annotations: *colla parte*, *Ped.*, *x*, *p*, *Ped.*, *dim.*

Musical staff with bass clef, key signature of two flats, and a bass line.

*1. 2. V. B.*

Musical staff with treble clef, key signature of two flats, and a melodic line.

Musical staff with treble clef, key signature of two flats, and a melodic line. Includes annotations: *con Ped.*, *po' a*, *mf Ped.*, *p Ped.*, *Ped.*

Four empty musical staves at the bottom of the page.

