

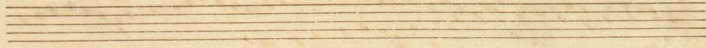
Handwritten musical score for a piece in 3/4 time. The score consists of six staves. The first five staves contain a single melodic line with various rhythmic patterns, including eighth and sixteenth notes, and rests. The sixth staff concludes the piece with a double bar line and the word *fine*.

Valse par Gaude

Handwritten musical score for a waltz in 3/4 time. The score consists of four staves. The first two staves are for the melody, with dynamics *p* (piano) and *f* (forte) indicated. The third staff is for the bass line, with dynamics *p* and *acc.* (accent) indicated. The fourth staff continues the bass line with dynamics *p* and *f*.

Handwritten musical score on ten staves. The notation includes various rhythmic values, dynamics (p, f, cresc., dec.), and articulation marks. A "Trio" section is indicated in the second staff. The piece concludes with a double bar line and repeat dots.

Walter D. C.



Handwritten musical score for three staves. The first staff has a treble clef and a common time signature. The second staff has a bass clef. The third staff has a bass clef and ends with the word "fine".

Valse par Gaude

Handwritten musical score for six staves. The first staff has a treble clef and a 3/4 time signature. The second staff has a treble clef. The third staff has a treble clef and the word "cresc." below it. The fourth staff has a treble clef. The fifth staff has a treble clef. The sixth staff has a treble clef.

Trio
f
fin *p*

cres.

cres. *Walter D. C. al fine*

