

noll. fine

Theme varié F. Nicolai
(Terzo Chitarra)

Adagio non troppo

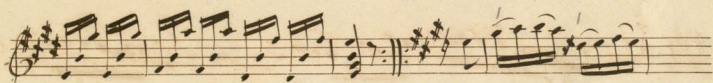
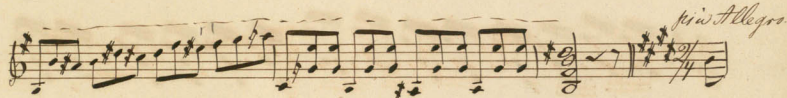
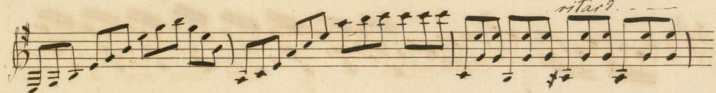
Introduction 2/4

Terza Allegretto

Var 1

Var 2.

Var 3. più lento



Handwritten musical score for a piece in 3/4 time. The score consists of six staves. The first five staves contain a single melodic line with various rhythmic patterns, including eighth and sixteenth notes, and rests. The sixth staff concludes the piece with a double bar line and the word *fine*.

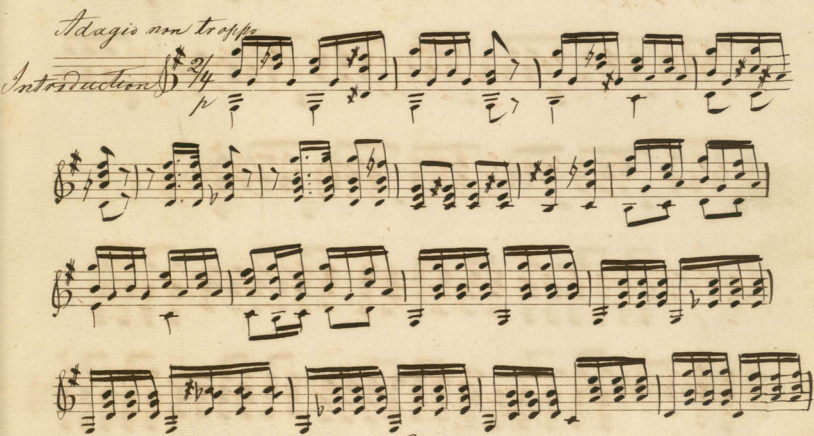
Valse par Gaude

Handwritten musical score for a piece in 3/4 time, titled "Valse par Gaude". The score consists of four staves. The first two staves contain a single melodic line with various rhythmic patterns, including eighth and sixteenth notes, and rests. The third staff contains a piano accompaniment with chords and eighth notes. The fourth staff contains a single melodic line with various rhythmic patterns, including eighth and sixteenth notes, and rests. The score includes dynamic markings such as *p* and *cr.*

Handwritten musical notation on a single staff. The notation includes eighth and sixteenth notes, rests, and a fermata. Below the staff, there are markings for dynamics: p , p , *rall.*, p , and p . The word *fine* is written at the end of the staff.

Thème varié F. Nicolai

Adagio non troppo
Introduction



Tema. Allegretto



Var 1

pp.

Var 2

p

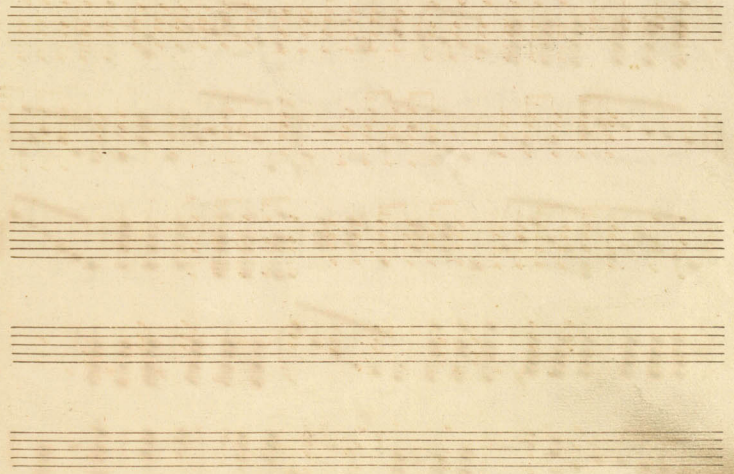
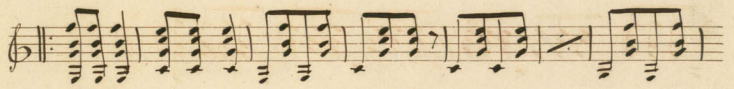
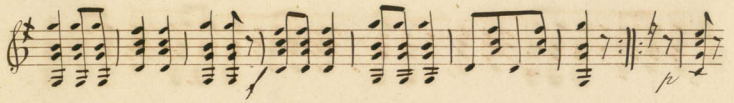
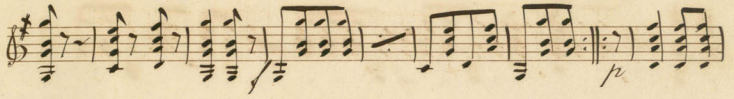
Var 3

più lento

più Allegro

ritard

p



Handwritten musical score for three staves. The first staff is in treble clef with a piano (*p*) dynamic marking. The second staff is in bass clef. The third staff is in bass clef and ends with the word *fine*.

Valse par Gaude

Handwritten musical score for six staves. The first staff is in treble clef with a 3/4 time signature and a piano (*p*) dynamic marking. The second staff is in treble clef with a piano (*p*) dynamic marking. The third staff is in treble clef with a *cresc.* marking. The fourth, fifth, and sixth staves are in treble clef.