

Potpourri de l'Opera: Fra Diavolo. J. J. Kuller op. 5.

Grave

Intro

26 Allegro

mu 7910 1990

Moderato

Handwritten musical score for Moderato, consisting of seven staves of music. The notation includes treble clefs, a common time signature (C), and various rhythmic values such as eighth and sixteenth notes. The score features several dynamic markings, including *p* (piano) and *f* (forte), and includes fingerings (e.g., 5, 10, 15, 20, 25) and articulation marks. The music concludes with a double bar line and repeat signs.

Andante con moto

Handwritten musical score for Andante con moto, consisting of three staves of music. The notation includes treble clefs, a 9/8 time signature, and various rhythmic values such as eighth and sixteenth notes. The score features dynamic markings, including *p* (piano) and *mf* (mezzo-forte), and includes fingerings (e.g., 5, 10, 15) and articulation marks. The music concludes with a double bar line and repeat signs.

20

25
Dim. *Andantino con moto*

30

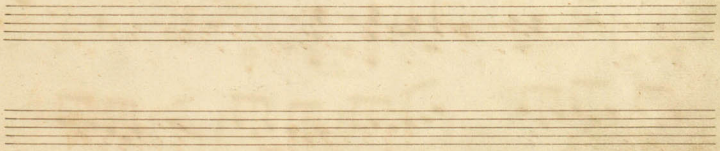
10

15

20

28
Allegro, recit. Fant. 1^{va}

32



Alligre maestoso

mf

5

10

15

20

25

30

35

40

45

50

52

Andantino 2.

6/8

1/4

cra

ritard

Handwritten musical score on six staves. The notation includes treble clefs, rhythmic markings, and dynamic markings such as *ff* and *f*. Measure numbers 10, 15, 20, 25, 30, 35, 40, and 45 are indicated above the staves. The score concludes with a double bar line and a *ff* marking.

Four sets of empty musical staves, each consisting of five lines, located at the bottom of the page.

Handwritten musical score for a single system, consisting of six staves. The music is in 3/4 time and features a complex rhythmic pattern of eighth and sixteenth notes. The score includes dynamic markings such as *ff* and *ff*, and a *Cresc.* marking. Measure numbers 50, 55, 60, 65, 70, and 80 are indicated. The final measure of the sixth staff is marked with a double bar line and a fermata.

Variazioni über einen Vierteschen Liedchen. J. Bott op. 40.

Moderato

Handwritten musical score for a single system, consisting of three staves. The music is in 3/4 time and features a complex rhythmic pattern of eighth and sixteenth notes. The score includes dynamic markings such as *p*, *p*, *p*, *p*, *p*, and *p*. The first staff is marked with a double bar line and a fermata. The second staff is marked with a double bar line and a fermata. The third staff is marked with a double bar line and a fermata.

Piu mosso

Handwritten musical score for a piece marked *Piu mosso*. The score consists of ten staves of music. The first two staves are treble clef, and the remaining eight are bass clef. The music features a complex rhythmic pattern of eighth and sixteenth notes, often beamed together. There are several dynamic markings, including *p* (piano) and *f* (forte), and some articulation marks like accents and slurs. The notation is dense and characteristic of 18th or 19th-century manuscript notation.

Potpourri dell'opera Fra Diavolo. I. Ad. Molto sp. d.
(Terzo Chitarra)

Grave:

Handwritten musical score for a piece marked *Grave*. The score is on a single staff with a treble clef. It begins with the tempo marking *Grave* and the dynamic marking *mf* (mezzo-forte). The music features a simple, slow-moving melody with some chromaticism. There are some articulation marks like slurs and accents. The notation is clear and legible.

Handwritten musical score on aged paper, featuring ten staves of music. The notation includes treble clefs, various time signatures (including 6/8), and dynamic markings such as *mf*, *pp*, *ff*, *mezzo*, and *con.*. The score is marked with measure numbers 5, 10, 15, 20, 25, and 36. A tempo change to *All. gro.* is indicated at measure 36, accompanied by a change in time signature to 6/8. The music consists of a melodic line and a bass line with chords and arpeggios. The piece concludes with a double bar line and a final chord.

Moderato

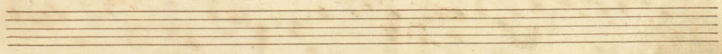
Handwritten musical score for the Moderato section, measures 1 through 33. The score is written on ten staves. The first staff begins with a treble clef, a key signature of one sharp (F#), and a common time signature (C). The music features a melodic line in the upper voice and a bass line with chords. Measure numbers 1, 5, 10, 15, 20, 25, and 30 are clearly marked. The notation includes eighth and sixteenth notes, rests, and various chord symbols.

Handwritten musical score for the Andante con moto section, measures 34 through 45. The score is written on five staves. At measure 34, there is a double bar line, a change in key signature to two sharps (D major), and a new time signature of 6/8. The tempo marking "Andante con moto" is written above the staff. Measure numbers 34, 36, 40, and 45 are marked. The notation includes eighth and sixteenth notes, rests, and various chord symbols.

Handwritten musical score on aged paper, featuring multiple staves of music. The score includes various musical notations such as notes, rests, and dynamic markings. Key markings include:

- Measure 20: *rit.*
- Measure 26: *Dim.*
- Measure 28: *Allegro*
- Measure 32: *rit.*
- Measure 34: *rit.*
- Measure 36: *rit.*
- Measure 38: *rit.*
- Measure 40: *rit.*
- Measure 42: *rit.*
- Measure 44: *rit.*
- Measure 46: *rit.*
- Measure 48: *rit.*
- Measure 50: *rit.*
- Measure 52: *rit.*
- Measure 54: *rit.*
- Measure 56: *rit.*
- Measure 58: *rit.*
- Measure 60: *rit.*
- Measure 62: *rit.*
- Measure 64: *rit.*
- Measure 66: *rit.*
- Measure 68: *rit.*
- Measure 70: *rit.*
- Measure 72: *rit.*
- Measure 74: *rit.*
- Measure 76: *rit.*
- Measure 78: *rit.*
- Measure 80: *rit.*
- Measure 82: *rit.*
- Measure 84: *rit.*
- Measure 86: *rit.*
- Measure 88: *rit.*
- Measure 90: *rit.*
- Measure 92: *rit.*
- Measure 94: *rit.*
- Measure 96: *rit.*
- Measure 98: *rit.*
- Measure 100: *rit.*

The score concludes with a double bar line and the initials "V.L." written below the final staff.



Alligro maestoso

This is a handwritten musical score for piano, consisting of ten staves. The music is written in a major key with a common time signature (C). The tempo and mood are indicated by the title "Alligro maestoso".

The score includes several performance markings and annotations:

- mf**: Mezzo-forte, appearing at the beginning of the first staff.
- f**: Forte, appearing in the middle of the sixth staff.
- cresc.**: Crescendo, appearing at the end of the tenth staff.
- Dol**: Diminuendo, appearing in the middle of the eighth staff.

Measure numbers are written above the staves at intervals: 5, 10, 15, 20, 25, 30, 35, 40, and 45. The notation includes various rhythmic patterns, such as eighth and sixteenth notes, and rests. There are also some handwritten corrections or markings, such as a large "f" in the sixth staff and a "cresc." in the tenth staff.

Handwritten musical score for a piece in 6/8 time, marked *Andantino*. The score consists of two staves: a treble clef staff and a bass clef staff. The key signature is three sharps (F#, C#, G#). The piece is marked with various dynamics and articulations, including *rit*, *sol sempre*, and *ff*. The score is divided into measures, with measure numbers 50, 10, 15, 20, 25, 30, 35, 40, and 45 indicated. The piece concludes with a double bar line and the initials "P.D." in the bass clef staff.

Handwritten musical score for a variation. The score consists of eight systems of staves. The first system has a treble clef staff with a tempo marking of 50 and a dynamic marking of *dol.* Below it is a bass clef staff with rhythmic markings. The second system continues with treble and bass clef staves, with a tempo marking of 60. The third system has a treble clef staff with a tempo marking of 65 and a bass clef staff with rhythmic markings. The fourth system has a treble clef staff with a tempo marking of 70 and a bass clef staff with rhythmic markings. The fifth system has a treble clef staff with a tempo marking of 75 and a bass clef staff with rhythmic markings. The sixth system has a treble clef staff with a tempo marking of 80 and a bass clef staff with rhythmic markings. The seventh system has a treble clef staff with a tempo marking of 84 and a bass clef staff with rhythmic markings. The eighth system has a treble clef staff with a tempo marking of 84 and a bass clef staff with rhythmic markings. The score includes various musical notations such as notes, rests, and dynamics like *dol.* and *cresc.*

Variationen über einen Rhythmus für Klavier. J. Batt op. 40.

Moderato.

Tema

Handwritten musical score for the 'Tema' section. The score consists of two systems of staves. The first system has a treble clef staff with a 6/4 time signature and a dynamic marking of *p*. Below it is a bass clef staff with rhythmic markings. The second system continues with treble and bass clef staves, with a dynamic marking of *cresc.* and a tempo marking of *2/4*.