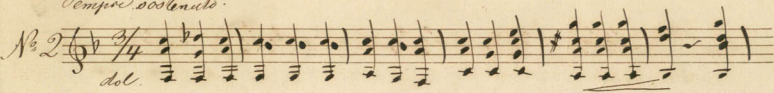


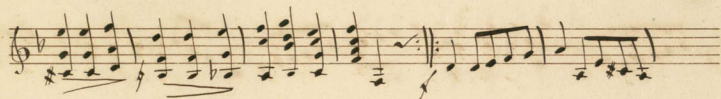
3 Walker von Burjam.

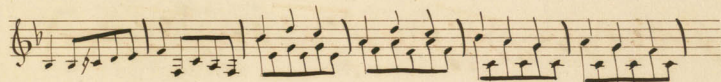
Handwritten musical score for "3 Walker von Burjam". The score is written on ten staves. The first staff begins with a treble clef, a key signature of one flat (B-flat), and a 3/4 time signature. The music consists of rhythmic patterns, primarily chords and eighth notes. The notation includes various dynamics such as *p*, *pp*, *sf*, and *espression*. There are also performance markings like *rit.* and *acc.*. The score features several measures with first, second, third, fourth, fifth, and sixth endings, indicated by numbers 1 through 6 above the notes. The piece concludes with a double bar line and a fermata.

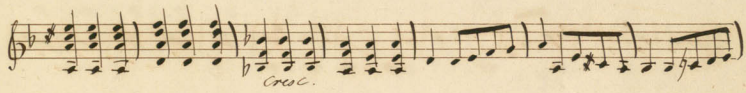
Tempo sostenuto.

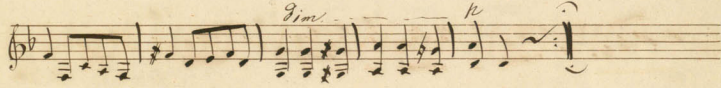
N^o 2 



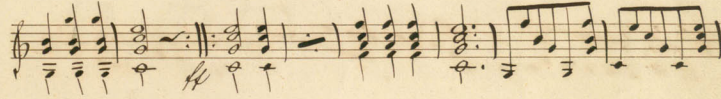


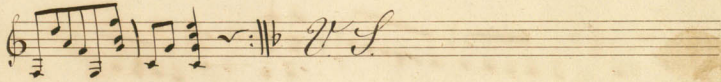


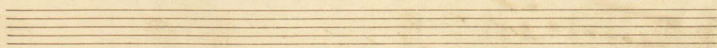




N^o 3 







scherzando

1 2 3 4 1 2 3 4

cresc. *mf*

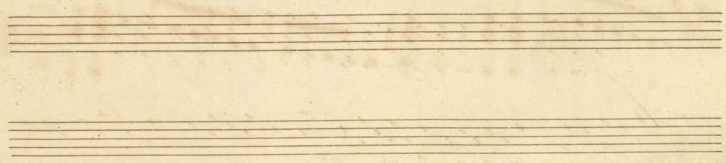
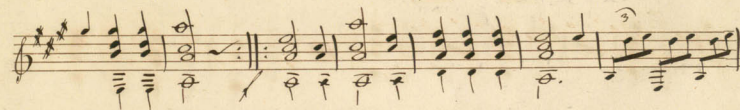
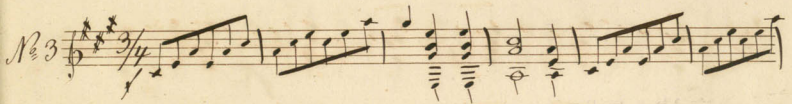
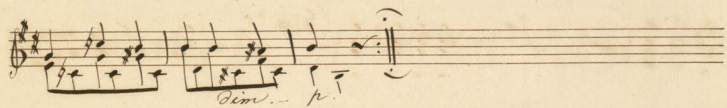
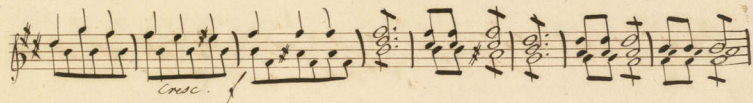
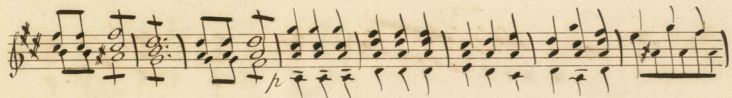
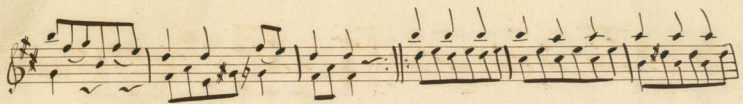
ff

1 2 3 4 5 6

cresc.

ff

1 *cresc.*



Handwritten musical notation on a single staff. The notation includes a treble clef, a key signature of one sharp (F#), and a 3/4 time signature. The music consists of a series of chords and melodic lines. Above the first six measures, the numbers 1 through 6 are written. Below the first measure, there are handwritten notes: *ff*, *p*, and *f*. The word *scherzando* is written below the final measure.

Handwritten musical notation on a single staff, continuing the piece with a melodic line and some chords.

Handwritten musical notation on a single staff, featuring a series of chords and a melodic line. The word *cresc.* is written below the first measure, and *mf* is written below the final measure.

Handwritten musical notation on a single staff. Above the first measure, the number 1 is written. Above the next five measures, the numbers 2 through 6 are written. Below the first measure, there are handwritten notes: *f* and *ff*.

Handwritten musical notation on a single staff, continuing the melodic and harmonic development.

Handwritten musical notation on a single staff, featuring a series of chords. The word *cresc.* is written below the first measure.

Handwritten musical notation on a single staff, consisting of a series of chords.

Handwritten musical notation on a single staff. The word *cresc.* is written below the first measure. The piece concludes with a double bar line and a repeat sign.

Handwritten musical notation on a single staff, showing the final measures of the piece, including a double bar line and a repeat sign.

