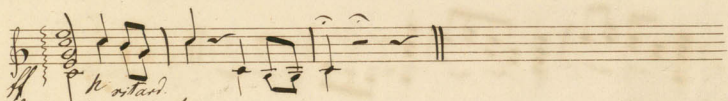


Variations par. Ok. Furlin.

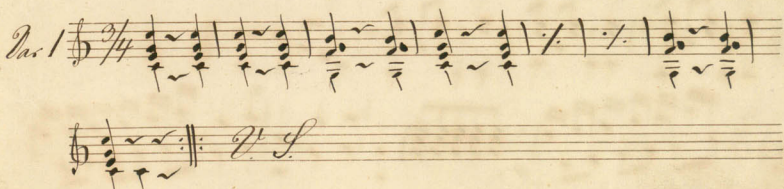
Andante

Intro. 



Andante con moto

Tema 

Var. 1 

Two staves of musical notation. The top staff is in treble clef and the bottom staff is in bass clef. Both staves contain rhythmic patterns of eighth and sixteenth notes with stems pointing up and down.

Var. 2

Three staves of musical notation. The top staff is in treble clef with a 3/4 time signature. The middle and bottom staves are in bass clef. The music features eighth and sixteenth notes with stems pointing up and down, and includes some rests and repeat signs.

Var. 3

Four staves of musical notation. The top staff is in treble clef with a 3/4 time signature. The bottom three staves are in bass clef. The music features eighth and sixteenth notes with stems pointing up and down, and includes some rests and repeat signs.

Var. 4

Two staves of musical notation. The top staff is in treble clef with a 3/4 time signature. The bottom staff is in bass clef. The music features eighth and sixteenth notes with stems pointing up and down, and includes some rests and repeat signs.

Handwritten musical score for the first system, consisting of two staves. The top staff begins with a treble clef, a key signature of two flats (B-flat and E-flat), and a 3/4 time signature. It contains a series of chords and melodic lines with dynamic markings such as *p* and *p.*. The bottom staff continues the accompaniment with similar rhythmic patterns and dynamics.

Movimento in Gaste

Var 5

Handwritten musical score for the second system, starting with the label "Var 5". It features a treble clef, a key signature of two flats, and a 3/4 time signature. The notation shows a melodic line with various rhythmic values and dynamic markings.

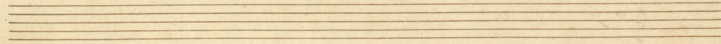
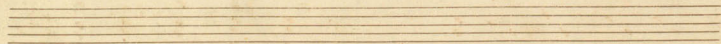
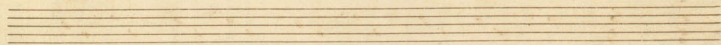
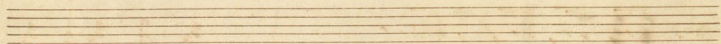
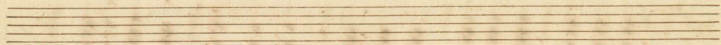
Handwritten musical score for the third system, continuing the melodic line from the previous system. It includes dynamic markings such as *poco* and *a poco*.

Handwritten musical score for the fourth system, featuring dynamic markings such as *cresc. e. accelerando* and *ritard. decresc. e.*

Handwritten musical score for the fifth system, concluding with the dynamic marking *morendo*.

No. 6.

Handwritten musical score for No. 6, consisting of five staves. The music is written in treble clef with a 3/4 time signature. The first staff begins with a treble clef, a key signature of one flat (B-flat), and a 3/4 time signature. The melody is primarily eighth and sixteenth notes, often beamed together. The accompaniment consists of chords and single notes. The second staff features a repeat sign and a fermata. The third staff includes dynamic markings such as *mf* and *2^{da}*. The fourth staff continues the melodic and harmonic development. The fifth staff concludes the piece with a double bar line and a fermata.



Variations par. M. Fiesler
(Tema Ekstara)

Andante

Introd.

2 1 4
2 1 2 4
2 1
3 2 3

ritard. *armonici*

Andante con moto

Tema

mf *mf*

Var. 1

Handwritten musical notation, first system. Treble clef, key signature of one sharp (F#), and 3/4 time signature. The melody consists of eighth-note patterns. The bass line features chords with stems pointing downwards.

Handwritten musical notation, second system. The melody continues with eighth-note patterns. A handwritten label "Var. 2." is written above the staff. The bass line continues with downward-pointing stems.

Handwritten musical notation, third system. The melody continues with eighth-note patterns. The bass line continues with downward-pointing stems.

Handwritten musical notation, fourth system. The melody continues with eighth-note patterns. The bass line continues with downward-pointing stems.

Handwritten musical notation, fifth system. A handwritten label "Var. 3" is written above the staff. The melody continues with eighth-note patterns. The bass line continues with downward-pointing stems.

Handwritten musical notation, sixth system. The melody continues with eighth-note patterns. The bass line continues with downward-pointing stems.

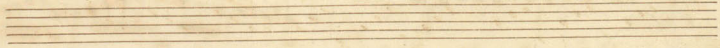
Handwritten musical notation, seventh system. The melody continues with eighth-note patterns. The bass line continues with downward-pointing stems.

Handwritten musical notation, eighth system. A handwritten label "Var. 4" is written above the staff. The melody continues with eighth-note patterns. The bass line continues with downward-pointing stems.

Handwritten musical notation, ninth system. The melody continues with eighth-note patterns. The bass line continues with downward-pointing stems.

Meno Andante

Cap. 5



Var. 6

Handwritten musical score for 'Var. 6', consisting of eight staves of music. The notation includes treble clef, a key signature of one sharp (F#), and a 3/4 time signature. The music features a complex rhythmic pattern of eighth and sixteenth notes. Below the notes are various symbols, including vertical lines and circles, which appear to be figured bass or lute tablature. The piece concludes with a double bar line and a decorative flourish.

Capatina dell'opera S. Barbore. A Diabelli
(Tiro a Chitarra) *Copius. N. 11*

Allegro

Handwritten musical score for 'Capatina dell'opera S. Barbore. A Diabelli'. The notation includes treble clef, a key signature of one sharp (F#), and a 3/8 time signature. The music features a complex rhythmic pattern of eighth and sixteenth notes. Below the notes are various symbols, including vertical lines and circles, which appear to be figured bass or lute tablature.