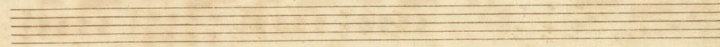
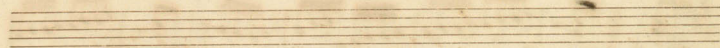
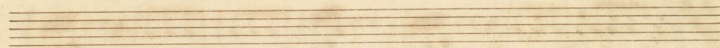
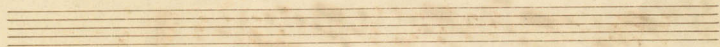
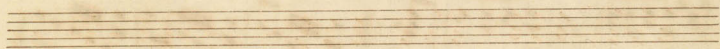
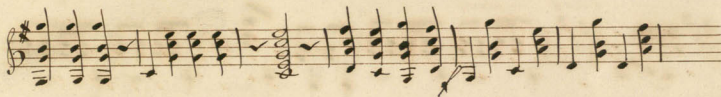
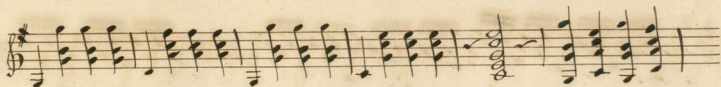
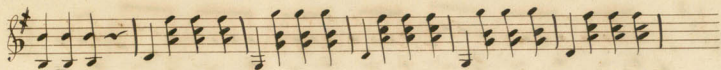


Duetto nell'opera: *L'Osule di Roma* da Donizetti

N. Giuliani

The image displays a handwritten musical score for a duet. It consists of ten staves of music, arranged vertically. The first staff begins with a treble clef, a common time signature (C), and a key signature of one sharp (F#). The music is written in a style characteristic of the 19th century, with clear notation for notes, rests, and bar lines. The score includes various rhythmic values, including eighth and sixteenth notes, and rests. There are several measures with rests, particularly in the later staves. The paper shows signs of age, with some staining and discoloration.

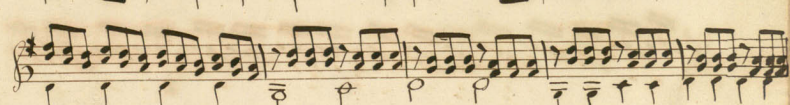
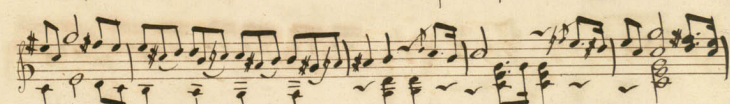
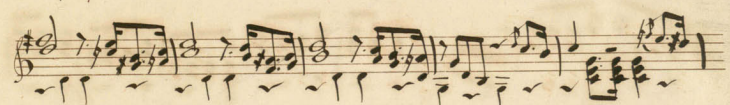
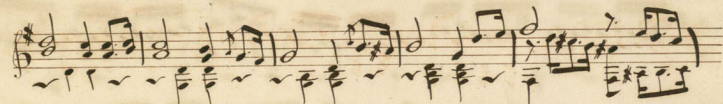
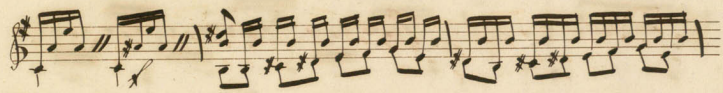
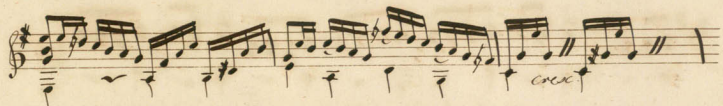


*Duetto nell'opera L'Esule di Roma da Donizetti.*

*Moderato*

*M. Giuliani.*

The image displays a handwritten musical score for a duet, consisting of ten staves of music. The notation is in a single system, with each staff containing a melodic line and a corresponding accompaniment line. The music is written in a style characteristic of the 19th century, with clear note heads, stems, and rests. The tempo is marked as 'Moderato'. The score includes various musical notations such as eighth and sixteenth notes, rests, and dynamic markings like 'v' (piano) and 'f' (forte). The paper shows signs of age, with some discoloration and wear.



*fine.*