

2 Duos faciles par. F. Sor op. 55.
1^{er} Duo.

Andante,

Handwritten musical score on aged paper, featuring ten staves of music. The notation includes treble clefs, a key signature of one sharp (F#), and a 3/8 time signature. The score is marked with various measures and includes the tempo instruction *Alliegretto.*

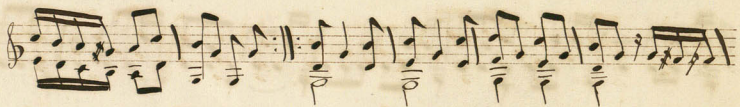
Measure numbers are indicated by small numbers above the staves: 40, 50, 55, 60, 65, 70, 72, 80, 85, 90, 95, 100, 105, 110, 115, 120, 125, 130, 135, 140, 145, 150, 155, 160, 165, 170, 175, 180, 185, 190, 195, 200, 205, 210, 215, 220, 225, 230, 235, 240, 245, 250, 255, 260, 265, 270, 275, 280, 285, 290, 295, 300, 305, 310, 315, 320, 325, 330, 335, 340, 345, 350, 355, 360, 365, 370, 375, 380, 385, 390, 395, 400, 405, 410, 415, 420, 425, 430, 435, 440, 445, 450, 455, 460, 465, 470, 475, 480, 485, 490, 495, 500, 505, 510, 515, 520, 525, 530, 535, 540, 545, 550, 555, 560, 565, 570, 575, 580, 585, 590, 595, 600, 605, 610, 615, 620, 625, 630, 635, 640, 645, 650, 655, 660, 665, 670, 675, 680, 685, 690, 695, 700, 705, 710, 715, 720, 725, 730, 735, 740, 745, 750, 755, 760, 765, 770, 775, 780, 785, 790, 795, 800, 805, 810, 815, 820, 825, 830, 835, 840, 845, 850, 855, 860, 865, 870, 875, 880, 885, 890, 895, 900, 905, 910, 915, 920, 925, 930, 935, 940, 945, 950, 955, 960, 965, 970, 975, 980, 985, 990, 995, 1000.

The score includes various musical notations such as notes, rests, and bar lines. There are also some markings that appear to be measure numbers or section indicators, such as 20, 25, 30, 35, 40, 45, 50, 55, 60, 65, 70, 75, 80, 85, 90, 95, 100, 105, 110, 115, 120, 125, 130, 135, 140, 145, 150, 155, 160, 165, 170, 175, 180, 185, 190, 195, 200, 205, 210, 215, 220, 225, 230, 235, 240, 245, 250, 255, 260, 265, 270, 275, 280, 285, 290, 295, 300, 305, 310, 315, 320, 325, 330, 335, 340, 345, 350, 355, 360, 365, 370, 375, 380, 385, 390, 395, 400, 405, 410, 415, 420, 425, 430, 435, 440, 445, 450, 455, 460, 465, 470, 475, 480, 485, 490, 495, 500, 505, 510, 515, 520, 525, 530, 535, 540, 545, 550, 555, 560, 565, 570, 575, 580, 585, 590, 595, 600, 605, 610, 615, 620, 625, 630, 635, 640, 645, 650, 655, 660, 665, 670, 675, 680, 685, 690, 695, 700, 705, 710, 715, 720, 725, 730, 735, 740, 745, 750, 755, 760, 765, 770, 775, 780, 785, 790, 795, 800, 805, 810, 815, 820, 825, 830, 835, 840, 845, 850, 855, 860, 865, 870, 875, 880, 885, 890, 895, 900, 905, 910, 915, 920, 925, 930, 935, 940, 945, 950, 955, 960, 965, 970, 975, 980, 985, 990, 995, 1000.

A handwritten musical score consisting of ten staves of music. The notation is in a single system with a treble clef and a key signature of one sharp (F#). The music is written in a rhythmic style, possibly a march or dance, with frequent eighth and sixteenth notes. The score is marked with measure numbers: 40, 50, 60, 70, 80, 90, 100, 110, 120, and 128. There are also performance markings such as *ff* (fortissimo) and *fine*. The paper shows signs of age, including some staining and discoloration.

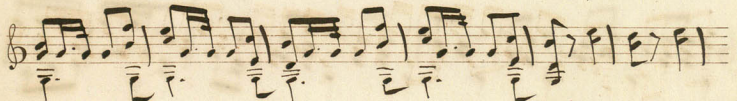
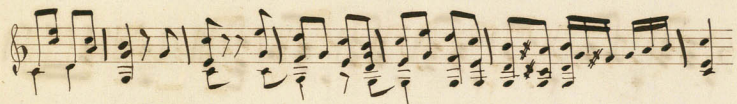
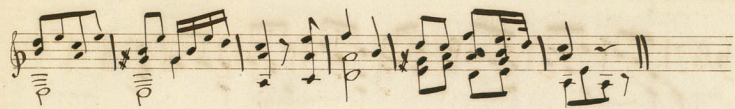
Da II

Andante



Mirou





Mouvement de Valse.

This is a handwritten musical score for a waltz, titled "Mouvement de Valse." The score is written on ten staves, each beginning with a treble clef and a 3/8 time signature. The music is characterized by a mix of eighth and sixteenth notes, often beamed together in groups. The piece includes several dynamic markings: *poco f.* (poco forte) appears at the beginning of the first staff and again in the second and fifth staves; *ff.* (fortissimo) is used in the fourth and sixth staves. There are also various articulation marks, such as slurs and accents, throughout the score. The notation includes stems, beams, and note heads, with some notes having flags or beams indicating specific rhythmic values. The overall style is that of a 19th-century manuscript, with clear handwriting and a focus on rhythmic patterns typical of a waltz.

Handwritten musical notation for a Mazurka, consisting of two staves of music. The notation is in treble clef and 3/8 time. The first staff contains six measures of music, and the second staff contains six measures, ending with a double bar line and the word "fine".

Mazurka de Chopin: Guillaume Tell

Handwritten musical notation for a Mazurka, consisting of three staves of music. The notation is in treble clef and 3/8 time. The first staff contains six measures of music, the second staff contains six measures, and the third staff contains six measures, ending with a double bar line and the word "fine".

Four empty musical staves, each consisting of five lines, arranged vertically.

2. Duos. faciles. par. F. Sor. op. 55.

1^{re} Duo.

Andante

1

10

12

20

26

flaz loco

flaz

36

12 12 5 7

40

45

50

55

58.

F. S.

Handwritten musical notation on a single staff. It begins with a treble clef and a key signature of one sharp (F#). The tempo marking is *Allegro*. The music consists of several measures, including a half rest. Fingerings are indicated by numbers 1-5. A measure number '60' is written above the staff.

Handwritten musical notation on a single staff. It begins with a treble clef and a key signature of one sharp. The tempo marking is *Allegro*. The music consists of several measures. Fingerings are indicated by numbers 1-5. Measure numbers '70' and '12' are written above the staff.

Handwritten musical notation on a single staff. It begins with a treble clef and a key signature of one sharp. The music consists of several measures. A measure number '10' is written above the staff.

Handwritten musical notation on a single staff. It begins with a treble clef and a key signature of one sharp. The music consists of several measures. Fingerings are indicated by numbers 1-5. A measure number '15' is written above the staff.

Handwritten musical notation on a single staff. It begins with a treble clef and a key signature of one sharp. The music consists of several measures. Fingerings are indicated by numbers 1-5. A measure number '25' is written above the staff.

Handwritten musical notation on a single staff. It begins with a treble clef and a key signature of one sharp. The music consists of several measures. Fingerings are indicated by numbers 1-5. Measure numbers '30' and '35' are written above the staff.

Handwritten musical notation on a single staff. It begins with a treble clef and a key signature of one sharp. The music consists of several measures. Fingerings are indicated by numbers 1-5. A measure number '40' is written above the staff.

Handwritten musical notation on a single staff. It begins with a treble clef and a key signature of one sharp. The music consists of several measures. Fingerings are indicated by numbers 1-5. Measure numbers '45' and '50' are written above the staff.

Handwritten musical notation on a single staff. It begins with a treble clef and a key signature of one sharp. The music consists of several measures. Fingerings are indicated by numbers 1-5. A measure number '55' is written above the staff.

Handwritten musical notation on a single staff. It begins with a treble clef and a key signature of one sharp. The music consists of several measures. Fingerings are indicated by numbers 1-5. Measure numbers '60' and '65' are written above the staff.

Handwritten musical notation on a single staff, featuring eighth-note patterns. A measure number '70' is written above the first measure.

Handwritten musical notation on a single staff, featuring eighth-note patterns. Measure numbers '74', '2', '2', '1', '3', and '80' are written above the staff.

Handwritten musical notation on a single staff, featuring eighth-note patterns. A measure number '85' is written above the fifth measure.

Handwritten musical notation on a single staff, featuring eighth-note patterns. A measure number '90' is written above the fourth measure.

Handwritten musical notation on a single staff, featuring eighth-note patterns. Measure numbers '95', '100', and a flat symbol 'b' are written above the staff.

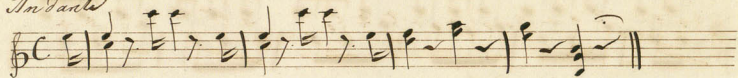
Handwritten musical notation on a single staff, featuring eighth-note patterns. Measure numbers '5', '10', '15', and '1' are written above the staff.

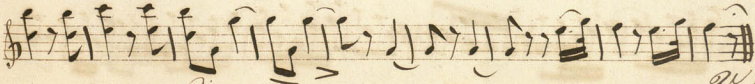
Handwritten musical notation on a single staff, featuring eighth-note patterns. Measure numbers '20', '25', '12', and '28' are written above the staff. The word 'fine' is written at the end of the staff.

Three empty musical staves at the bottom of the page.

Duo II.

Andante





Dim.

P. J.

Mouvement de Valse

This image shows a handwritten musical score for a waltz, titled "Mouvement de Valse". The score is written on ten staves, alternating between treble and bass clefs. The time signature is 3/4. The music features a variety of rhythmic patterns, including eighth and sixteenth notes, and rests. There are several dynamic markings, such as *mf* and *f*, and articulation marks like accents and slurs. The notation includes various accidentals (sharps, flats, naturals) and fingerings (e.g., 2, 2, 0, 2, 2, 4, 1). The paper is aged and shows some staining, particularly in the lower right quadrant.

Maxurka de l'opera Guillaume Tell