

Fantasia for the Guitar

Largo

(God save the Queen)

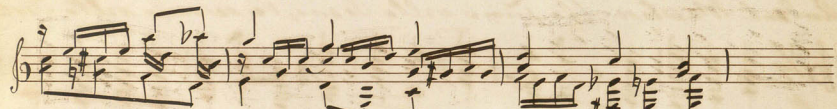
I A Musket

Introduction $\frac{3}{4}$

espress. $\frac{3}{4}$ Tema: God save the Queen

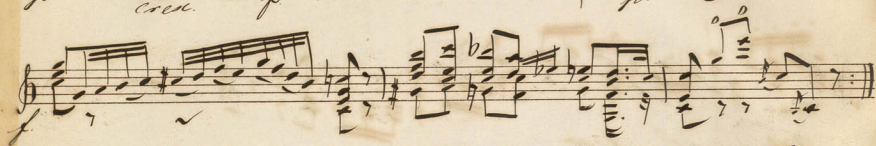
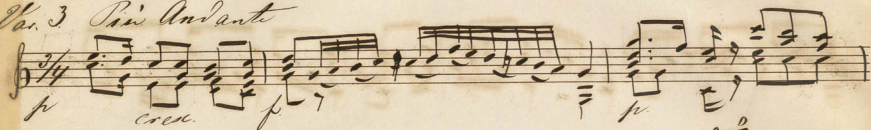
Andant. Maestoso (la prima volta Paris, la seconda volta Foch)

Cap. 1. Più mosso





Var. 3 Più Andante



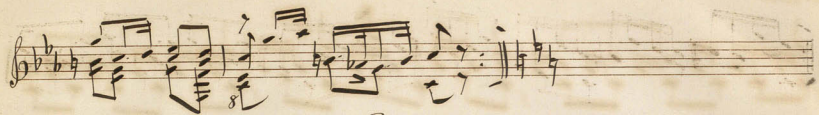
Var. 4 Più Allegro ma legato.



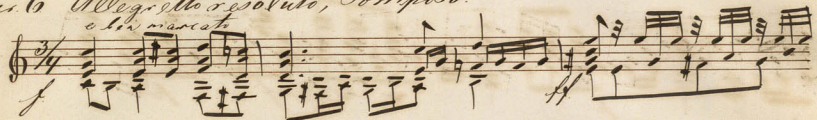


Var. 5. Minore Larghetto.





Ex. 6 Allegretto risoluto, Composto.
a la marcato



Coda

Handwritten musical notation on a single staff, featuring a series of eighth notes and rests. The notation is in a treble clef with a key signature of one sharp (F#). The notes are grouped in pairs, with a fermata over the first pair. The word "Coda" is written above the staff.

Handwritten musical notation on a single staff, featuring a series of chords and eighth notes. The notation is in a treble clef with a key signature of one sharp (F#). The notes are grouped in pairs, with a fermata over the first pair. The word "Coda" is written above the staff.

Handwritten musical notation on a single staff, featuring a series of chords and eighth notes. The notation is in a treble clef with a key signature of one sharp (F#). The notes are grouped in pairs, with a fermata over the first pair. The word "Coda" is written above the staff.

Handwritten musical notation on a single staff, featuring a series of chords and eighth notes. The notation is in a treble clef with a key signature of one sharp (F#). The notes are grouped in pairs, with a fermata over the first pair. The word "Coda" is written above the staff.

Handwritten musical notation on a single staff, featuring a series of chords and eighth notes. The notation is in a treble clef with a key signature of one sharp (F#). The notes are grouped in pairs, with a fermata over the first pair. The word "Coda" is written above the staff.

Handwritten musical notation on a single staff, featuring a series of chords and eighth notes. The notation is in a treble clef with a key signature of one sharp (F#). The notes are grouped in pairs, with a fermata over the first pair. The word "Coda" is written above the staff.

