

Es We der Fautsch

insorische Mauer

1811

A. Mertz

Kopiersalt after Original Manuscript, of L. G. /

Gu. in 1811

"Es lebe der Fasching" Walzer.

Guitar I ^{mo}

Intro:

The Intro section consists of five staves of music. The first staff begins with a treble clef, a key signature of one sharp (F#), and a 3/4 time signature. It features a melodic line with eighth and sixteenth notes, starting with a *f* dynamic. The second staff continues the melody with a *dolce* marking and a *f* dynamic. The third and fourth staves show a bass line with chords and single notes, including a *f* dynamic. The fifth staff concludes the introduction with a double bar line.

Walzer
No. 1.

The Walzer section consists of five staves of music. The first staff begins with a treble clef, a key signature of one sharp (F#), and a 3/4 time signature. It features a melodic line with eighth and sixteenth notes, starting with a *f* dynamic. The second and third staves continue the melody with various dynamics including *f*, *p*, and *ritardato*. The fourth and fifth staves show a bass line with chords and single notes, including a *p* dynamic. The section concludes with a double bar line.



Handwritten musical score, first system. The music is written on a single staff in G major (one sharp) and 3/4 time. It begins with a treble clef and a key signature of one sharp. The notation includes various rhythmic values such as quarter notes, eighth notes, and sixteenth notes, along with rests and dynamic markings like *f* and *pp*. The word *lasc* is written above the final measure of the system.

Handwritten musical score, second system. The music continues on a single staff in G major and 3/4 time. It features a variety of rhythmic patterns, including eighth and sixteenth notes, and rests. Dynamic markings such as *f*, *pp*, *cresc*, and *dim.* are present throughout the system. The notation is dense and includes many accidentals.

M.D. No 3.

No. 5.

Handwritten musical score for No. 5, consisting of ten staves of music. The score is written in treble clef with a key signature of one sharp (F#) and a common time signature (C). The notation includes various rhythmic values, accidentals, and dynamic markings such as *p* and *f*. The first staff is marked *mo.* and includes a slur over the first six measures. The second staff also begins with *mo.* and features a slur over the first three measures. The third staff has a slur over the first two measures. The fourth staff has a slur over the first three measures. The fifth staff has a slur over the first three measures. The sixth staff has a slur over the first three measures. The seventh staff has a slur over the first three measures. The eighth staff is marked *Scherzando.* and features a slur over the first three measures. The ninth staff has a slur over the first three measures. The tenth staff has a slur over the first three measures. The score concludes with a double bar line and a final chord.

M: H.

A handwritten musical score consisting of ten staves of music. The music is written in G major (one sharp) and uses a treble clef. The notation includes various rhythmic values such as eighth and sixteenth notes, as well as rests. There are several instances of slurs and phrasing marks. Some staves contain the word "Orlu" written below the notes. The handwriting is fluid and characteristic of 18th or 19th-century manuscript notation. The paper shows signs of age, including some staining and discoloration.

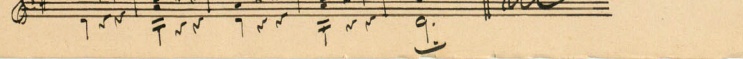
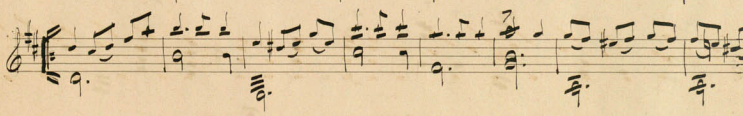
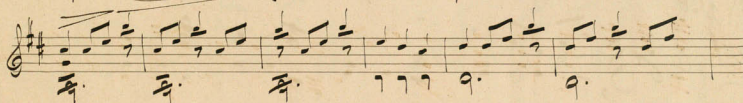
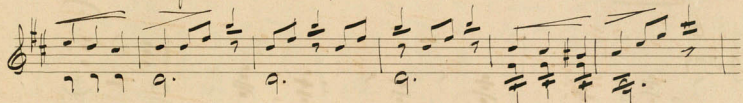
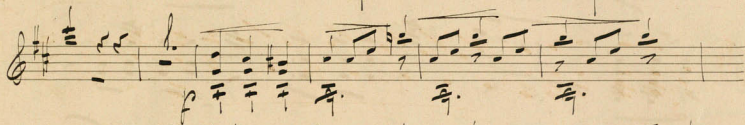
ms. No. 5.

N:5.

risoluto

con passione

Coda



Intro.

Walter nach J. N. Hertel

Moderato.

Walter.

N:2.

N:3.

No. 5

This is a handwritten musical score for a piece titled "No. 5". The score is written on ten staves, organized into five systems of two staves each. The notation includes various rhythmic values such as eighth and sixteenth notes, as well as rests and dynamic markings like *f* (forte) and *me* (mezzo). The music is written in a style characteristic of 18th or 19th-century manuscript notation. The first staff begins with a treble clef and a *f* dynamic marking. The second staff contains a *me* marking. The third and fourth staves continue the melodic and harmonic development. The fifth system, starting with the sixth staff, includes a double bar line and a repeat sign. The final two staves of the system are enclosed in a large bracket with a *10* marking above it, indicating a specific section or measure count. The paper shows signs of age, with some staining and discoloration.

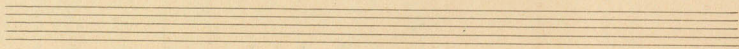
N: 11

A handwritten musical score consisting of eight staves of music. The notation is in a single melodic line, likely for a violin or flute. The key signature has one sharp (F#), and the time signature is 3/4. The music features a variety of rhythmic patterns, including eighth and sixteenth notes, and rests. There are several dynamic markings, including 'p' (piano) and 'f' (forte). The score concludes with a double bar line and a fermata over the final note.

Mus. N: 5.

No. 5.

This is a handwritten musical score for a piece titled "No. 5." The score is written on ten staves, each beginning with a treble clef. The music is characterized by a complex, rhythmic texture with many beamed notes and rests. Dynamics such as *f* (forte) and *mf* (mezzo-forte) are indicated throughout. There are also various articulations, including slurs and accents. The notation includes many beamed eighth and sixteenth notes, often with stems pointing downwards. Some staves feature multi-measure rests, with the number "2" written above the staff. The overall style is that of a personal manuscript or a composer's sketch, with some ink bleed-through and a slightly aged appearance.



Coda

1

2

3

p

f

cru

cru

p

f

M. B. Soc.

A handwritten musical score consisting of ten staves. The notation is in a single system, likely for a piano or similar instrument. The music features a variety of rhythmic values, including eighth and sixteenth notes, and rests. There are several dynamic markings, such as *fp* (fortissimo piano) and *mf* (mezzo-forte). The score includes complex textures with many beamed notes and some dense chordal passages. At the bottom of the page, there are some handwritten annotations: "cresc" under the first staff, "in" under the second staff, and "ad." under the third staff. The paper shows signs of age, with some staining and discoloration.

cresc

in

ad.

Handwritten musical notation on a single staff, featuring a treble clef and a key signature of one sharp (F#). The notation includes a series of notes with stems, some marked with accents, and a double bar line. The word "Credo" is written above the staff.

Handwritten musical notation on a single staff, continuing the piece with a treble clef and a key signature of one sharp. The notation includes a series of notes with stems, some marked with accents, and a double bar line. The word "Credo" is written above the staff.

Handwritten musical notation on a single staff, continuing the piece with a treble clef and a key signature of one sharp. The notation includes a series of notes with stems, some marked with accents, and a double bar line. The word "Credo" is written above the staff.

Handwritten musical notation on a single staff, continuing the piece with a treble clef and a key signature of one sharp. The notation includes a series of notes with stems, some marked with accents, and a double bar line. The word "Credo" is written above the staff.

Handwritten musical notation on a single staff, continuing the piece with a treble clef and a key signature of one sharp. The notation includes a series of notes with stems, some marked with accents, and a double bar line. The word "Credo" is written above the staff.

Handwritten musical notation on a single staff, continuing the piece with a treble clef and a key signature of one sharp. The notation includes a series of notes with stems, some marked with accents, and a double bar line. The word "Credo" is written above the staff.

Handwritten musical notation on a single staff, continuing the piece with a treble clef and a key signature of one sharp. The notation includes a series of notes with stems, some marked with accents, and a double bar line. The word "Credo" is written above the staff.

Handwritten musical notation on a single staff, continuing the piece with a treble clef and a key signature of one sharp. The notation includes a series of notes with stems, some marked with accents, and a double bar line. The word "Credo" is written above the staff.

Handwritten musical notation on a single staff, continuing the piece with a treble clef and a key signature of one sharp. The notation includes a series of notes with stems, some marked with accents, and a double bar line. The word "Credo" is written above the staff.

Handwritten musical notation on a single staff, continuing the piece with a treble clef and a key signature of one sharp. The notation includes a series of notes with stems, some marked with accents, and a double bar line. The word "Credo" is written above the staff.