

Barcarole.

Quos pour Deux Guitares.

par

J. K. Mertz.

1^{re} Guitare.

(Reprinted from Original manuscript, of Pleyel)

Liszt Op. 45

Barcarole.

Introd. Moderato assai.

Handwritten musical score for the introduction of the Barcarole. It features a treble clef staff with a key signature of one sharp (F#) and a 3/4 time signature. The music is marked *pp* (pianissimo) and includes various guitar-specific notations such as *flage.* (flageolet), *tr.* (trill), and *ritard.* (ritardando). The piece concludes with a double bar line and the dynamic marking *pp*.

Handwritten musical score for the first section of the Barcarole. It features a treble clef staff with a key signature of one sharp (F#) and a 3/4 time signature. The music is marked *Moderato quasi Andantino* and includes dynamic markings such as *pp* and *dolce*. The piece concludes with a double bar line.

Handwritten musical score for the second section of the Barcarole. It features a treble clef staff with a key signature of one sharp (F#) and a 3/4 time signature. The music is marked *pp* and includes dynamic markings such as *dolcissimo* and *ritard.*. The piece concludes with a double bar line.

Handwritten musical score for the third section of the Barcarole. It features a treble clef staff with a key signature of one sharp (F#) and a 3/4 time signature. The music is marked *pp* and includes dynamic markings such as *dolcissimo* and *ritard.*. The piece concludes with a double bar line.



Handwritten musical score on ten staves. The notation includes treble and bass clefs, time signatures, and various musical symbols such as notes, rests, and ornaments. The score is annotated with several performance instructions and markings:

- Staff 1:** *Andante* (written above the staff), *dolce.* (written below the staff), and a green letter **C** in the left margin.
- Staff 2:** *dolce.* (written below the staff).
- Staff 3:** *dolce.* (written below the staff), *ritard.* (written above the staff), *dimin.* (written above the staff), and *a tempo.* (written below the staff).
- Staff 4:** *cresc.* (written below the staff), *dolce.* (written below the staff), and *in tempo.* (written below the staff).
- Staff 5:** *in tempo.* (written below the staff), *espressivo.* (written below the staff), and a green letter **F** in the right margin.
- Staff 6:** *dimin.* (written below the staff), *f. p.* (written below the staff), and a large decorative flourish at the end of the staff.

Other markings include *Allegro* in the top right corner, *Allegro* written vertically on the right side of the first staff, and various numerical markings (e.g., 1-3, 2, 3, 4) indicating fingerings or articulation points.

Impromptu.

Guitarre 1.

Maestoso

dimin.

Sul D.

marcato.

t

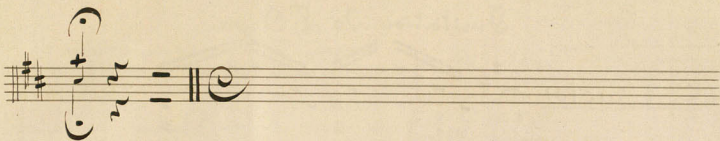
B

cresc.

cresc. - - - - - cen - - - do.

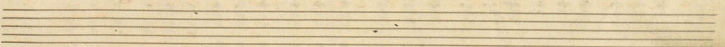
accelerando il Tempo.

Detailed description of the musical score: The score is written on ten staves. It begins with a treble clef, a key signature of one sharp (F#), and a common time signature (C). The first staff includes the tempo marking 'Maestoso' and a dynamic marking 'p:'. The second staff has 'dimin.' and 'Sul D.' markings. The third staff features a red 't' and 'marcato.' markings. The fourth and fifth staves contain dense chordal textures. The sixth staff has a red 'B' marking. The seventh staff includes 'cresc.' and 'B' markings. The eighth staff has 'cresc.' and 'B' markings. The ninth staff has 'cresc.' and 'B' markings. The tenth staff has 'cresc. - - - - - cen - - - do.' and 'accelerando il Tempo.' markings. The score includes various musical notations such as chords, arpeggios, and melodic lines.



Andante cantabile.

V.S. *Con moto.*



Imitation De L'Orga.

Con moto:

Grave.

Barcarole. Impromptu.

Duos pour deux Guitares.

par

J. K. Mertz.

2^{de} Guitarre.

Handwritten musical score consisting of seven staves. The notation includes various rhythmic patterns, primarily featuring triplets (indicated by a '3' above the notes) and sixteenth-note runs. The key signature has one sharp (F#). The score includes dynamic markings such as *dolce.* and *pp.*. There are also some handwritten annotations in green ink, including a 'B' at the top and a 'C' on the fifth staff. The music concludes with a final chord on the seventh staff.

V. G.

Three empty musical staves at the bottom of the page, consisting of five-line systems.

a tempo.

ritardando.

Handwritten musical score consisting of ten staves. The notation includes treble and bass clefs, a key signature of one sharp (F#), and a 3/4 time signature. The music features a melodic line with eighth and sixteenth notes, often grouped in triplets. The accompaniment consists of chords and rhythmic patterns. The score is annotated with "ritardando." at the beginning and "diminuendo" at the end. There are also some handwritten markings in green ink, including a large "D" at the top and a "p" on the fourth staff.

diminuendo

Andante cantabile:

p:

ritardando.

Con moto.

espressivo marcato.

dolce.

crescendo

dimin.

Grave.

Handwritten musical notation on a single staff. It begins with a treble clef and a common time signature. The music consists of a series of chords, some with stems pointing downwards. The dynamic marking *pp* is written below the first few chords, and *crescendo.* is written below the middle section. The staff ends with a fermata over a final chord.

Handwritten musical notation on a single staff. It begins with a bass clef. The music consists of a series of chords, some with stems pointing downwards. The dynamic marking *crescendo.* is written below the first few chords, and *p* is written below the middle section. The staff ends with a fermata over a final chord.

Handwritten musical notation on a single staff. It begins with a treble clef. The music consists of a series of chords, some with stems pointing downwards. The dynamic marking *pp* is written below the first few chords, and *crescendo* is written below the middle section. The staff ends with a fermata over a final chord.

Handwritten musical notation on a single staff. It begins with a bass clef. The music consists of a series of chords, some with stems pointing downwards. The staff ends with a fermata over a final chord.

Handwritten musical notation on a single staff. It begins with a treble clef. The music consists of a series of chords, some with stems pointing downwards. The dynamic marking *crescendo* is written below the middle section. The staff ends with a fermata over a final chord.

Handwritten musical notation on a single staff. It begins with a bass clef. The music consists of a series of chords, some with stems pointing downwards. The dynamic marking *pp* is written below the first few chords, and *dimin.* is written below the middle section. The staff ends with a fermata over a final chord.

Handwritten musical notation on a single staff. It begins with a treble clef. The music consists of a series of chords, some with stems pointing downwards. The dynamic marking *pp* is written below the first few chords, and *dim.* is written below the middle section. The staff ends with a fermata over a final chord.

Four empty musical staves, each with a treble clef and a common time signature.

Four empty musical staves, each with a treble clef and a common time signature.

Four empty musical staves, each with a treble clef and a common time signature.