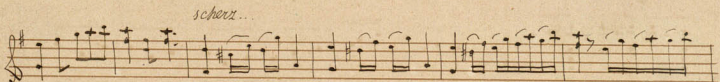
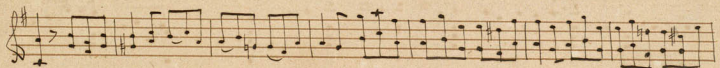
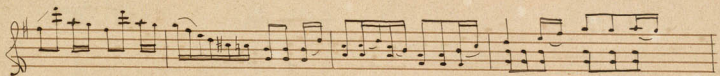
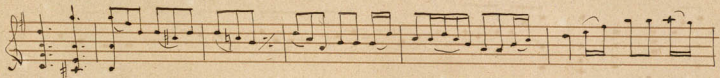


Erste Gitarre

Rondo von L. van Beethoven.

Transc. von J. Klingner Op. 25.

Allegro



Handwritten musical notation on a single staff, featuring treble clef, a key signature of one sharp (F#), and a common time signature (C). The notation includes eighth and sixteenth notes, rests, and dynamic markings such as *dimin.* and *cresc.*

Handwritten musical notation on a single staff, featuring treble clef, a key signature of one sharp (F#), and a common time signature (C). The notation includes eighth and sixteenth notes, rests, and dynamic markings such as *cresc.*

Handwritten musical notation on a single staff, featuring treble clef, a key signature of one sharp (F#), and a common time signature (C). The notation includes eighth and sixteenth notes, rests, and dynamic markings such as *cresc.*

Handwritten musical notation on a single staff, featuring treble clef, a key signature of one sharp (F#), and a common time signature (C). The notation includes eighth and sixteenth notes, rests, and dynamic markings such as *cresc.*

Handwritten musical notation on a single staff, featuring treble clef, a key signature of one sharp (F#), and a common time signature (C). The notation includes eighth and sixteenth notes, rests, and dynamic markings such as *cresc.*

Handwritten musical notation on a single staff, featuring treble clef, a key signature of one sharp (F#), and a common time signature (C). The notation includes eighth and sixteenth notes, rests, and dynamic markings such as *cresc.*

Handwritten musical notation on a single staff, featuring treble clef, a key signature of one sharp (F#), and a common time signature (C). The notation includes eighth and sixteenth notes, rests, and dynamic markings such as *cresc.*

Handwritten musical notation on a single staff, featuring treble clef, a key signature of one sharp (F#), and a common time signature (C). The notation includes eighth and sixteenth notes, rests, and dynamic markings such as *cresc.*

Handwritten musical notation on a single staff, featuring treble clef, a key signature of one sharp (F#), and a common time signature (C). The notation includes eighth and sixteenth notes, rests, and dynamic markings such as *cresc.*

Handwritten musical notation on a single staff, featuring treble clef, a key signature of one sharp (F#), and a common time signature (C). The notation includes eighth and sixteenth notes, rests, and dynamic markings such as *cresc.*



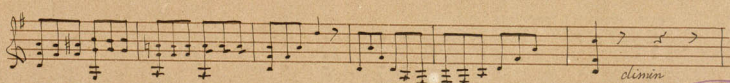
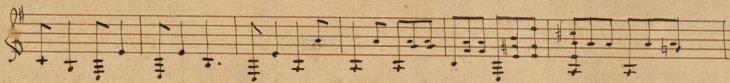
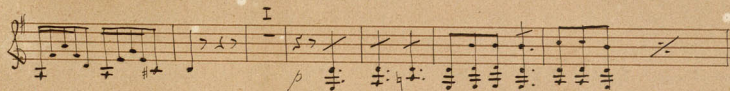
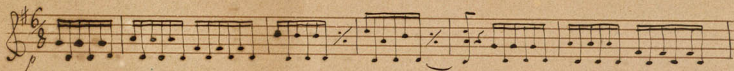
A handwritten musical score for guitar, consisting of ten staves. The music is written in a single system with a treble clef and a key signature of one sharp (F#). The notation includes various rhythmic values, accidentals, and dynamic markings. The first staff begins with a piano (*p*) dynamic. The second staff contains a double bar line with a slash, indicating a section change. The third staff features a 12-measure rest marked with a double bar line and the number 12. The fourth staff includes a 12-measure rest marked with a double bar line and the number 12, followed by the instruction *Leg.* (legato). The fifth staff has a *f* (forte) dynamic marking. The sixth staff contains another double bar line with a slash. The seventh staff has a double bar line with a slash. The eighth staff has a double bar line with a slash. The ninth staff has a double bar line with a slash. The tenth staff ends with a double bar line and repeat dots.



Zweite Gitarre,  
Rondo von L. van Beethoven.

trans. von Klingner & Sch.

Allegro





A handwritten musical score for piano, consisting of ten staves of music. The notation is in a single system, with each staff containing a melodic line and a corresponding harmonic accompaniment. The key signature is one flat (B-flat), and the time signature is 4/4. The score begins with a dynamic marking of *p* (piano) and includes various musical notations such as slurs, accents, and dynamic markings like *cresc* (crescendo) and *p*. The music features a mix of eighth and sixteenth notes, often beamed together, and rests. The score concludes with a double bar line and a key signature change to two flats (B-flat and E-flat).

