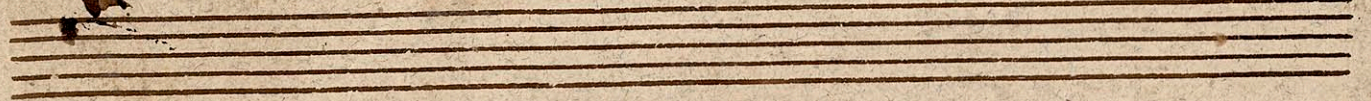
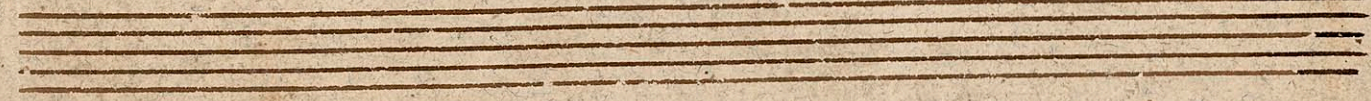
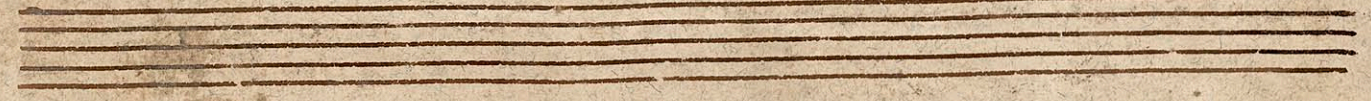
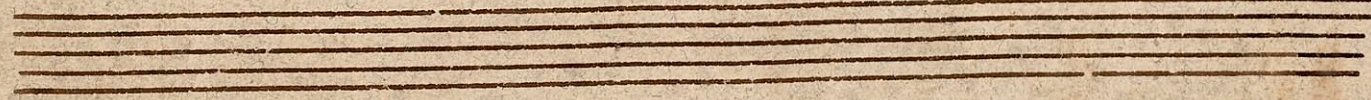
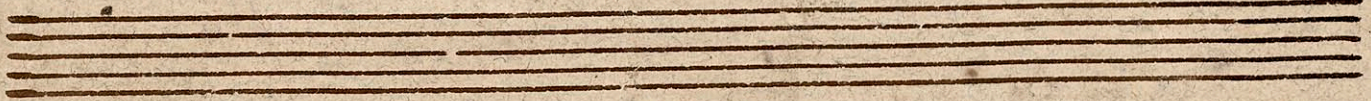
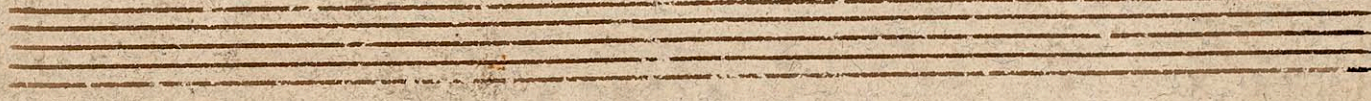
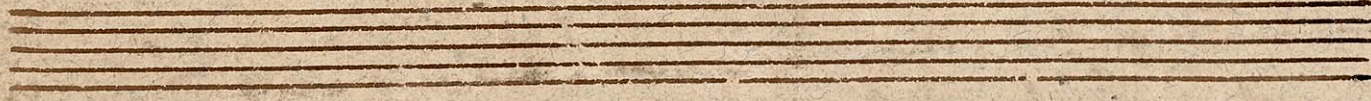
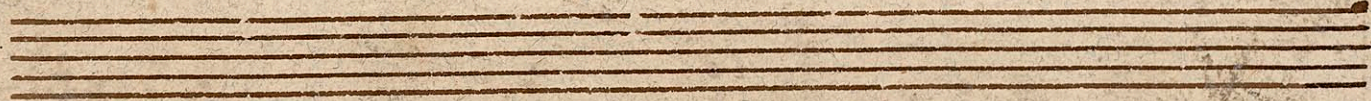
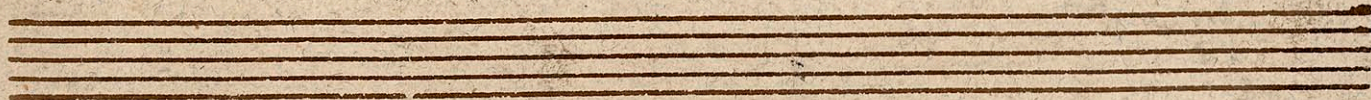
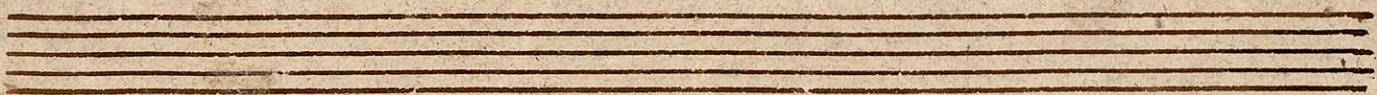


Violino 1^{mo}

Entrée



A handwritten musical score for Violino 1mo, titled "Entrée". The score consists of ten staves of music. The key signature is one sharp (F#) and the time signature is 3/4. The music is written in a cursive hand and includes various note values, rests, and dynamic markings such as "p." (piano). The score concludes with a double bar line and repeat signs.



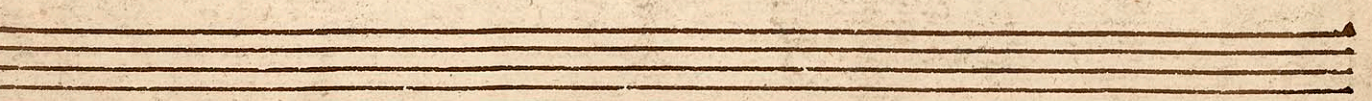
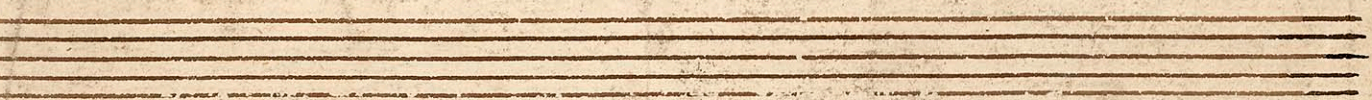
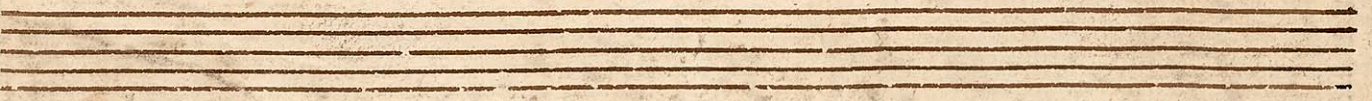
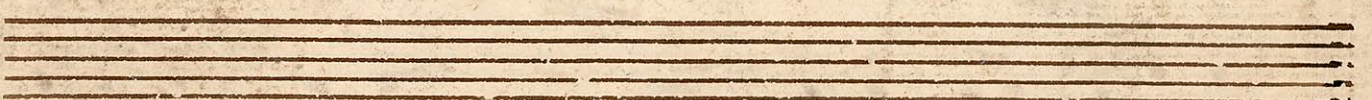
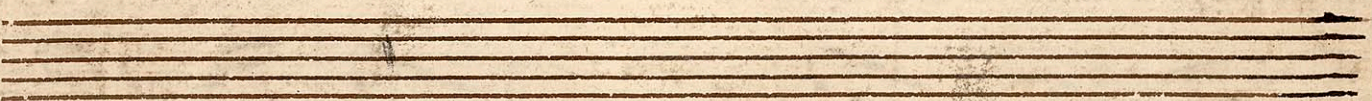
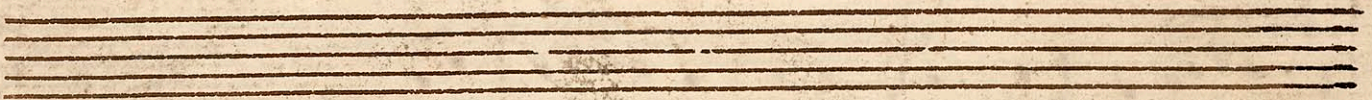
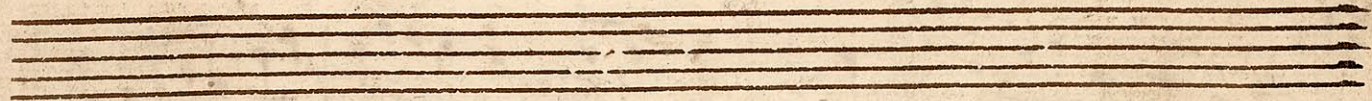
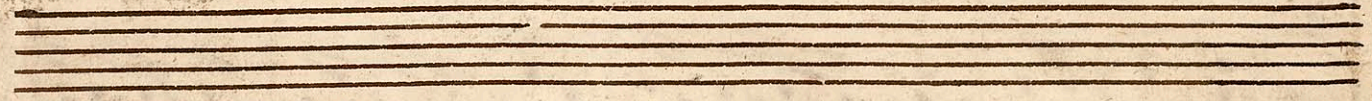
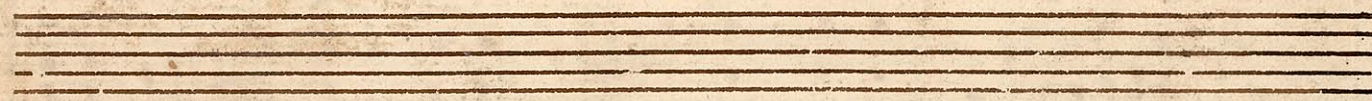
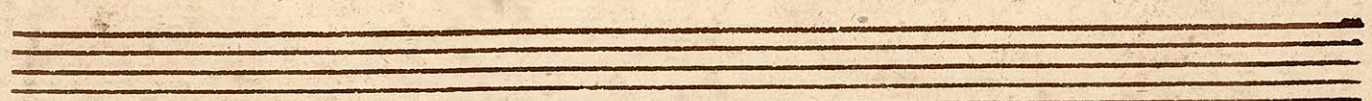
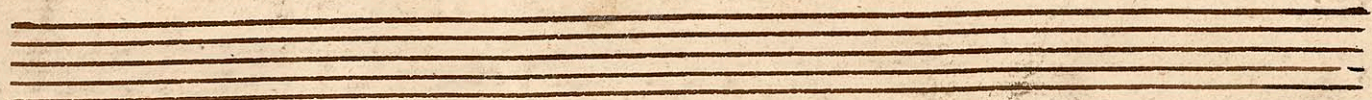
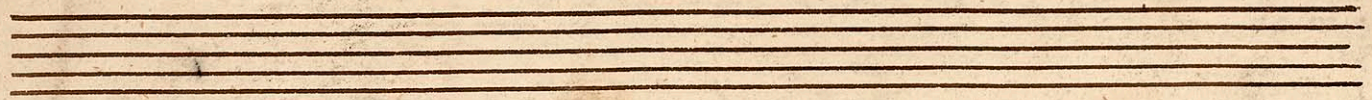
Violino I^{mo}

Entrée



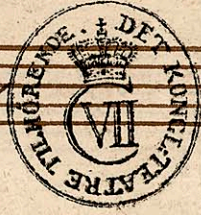
Handwritten musical score for Violino I, titled "Entrée". The score is written on ten staves. The key signature is G major (one sharp) and the time signature is 2/4. The notation includes various rhythmic values, slurs, and dynamic markings such as "p." and "f.". The music is written in a cursive, historical style. The first staff begins with a treble clef, a key signature of one sharp, and a 2/4 time signature. The score concludes with a double bar line and a fermata on the final note of the tenth staff.

Four empty musical staves at the bottom of the page, consisting of five-line staves without any notation.



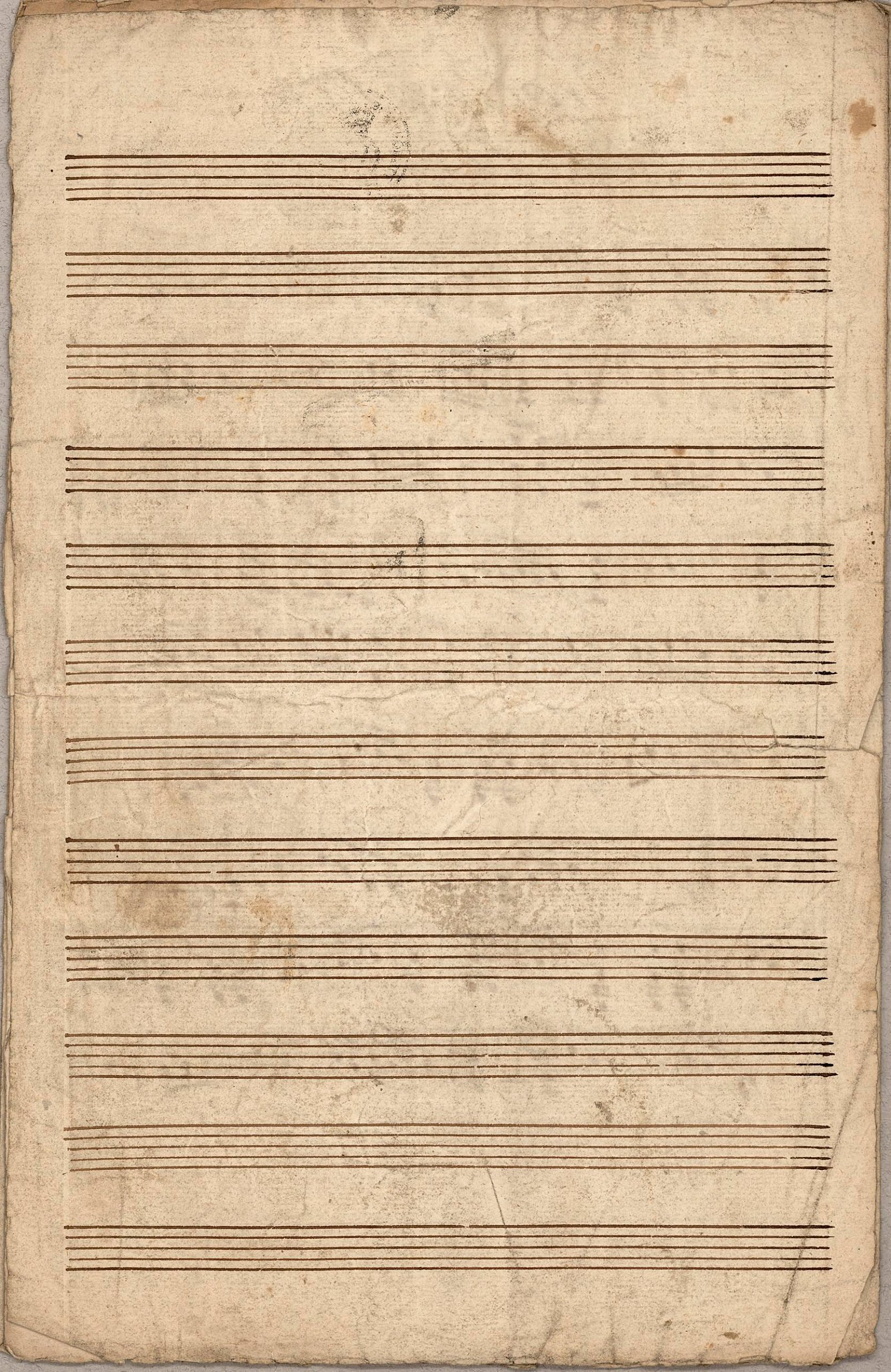
Violino 1^{mo} N^o 38

Entrée

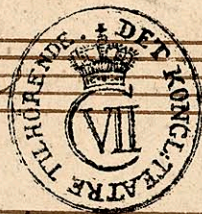


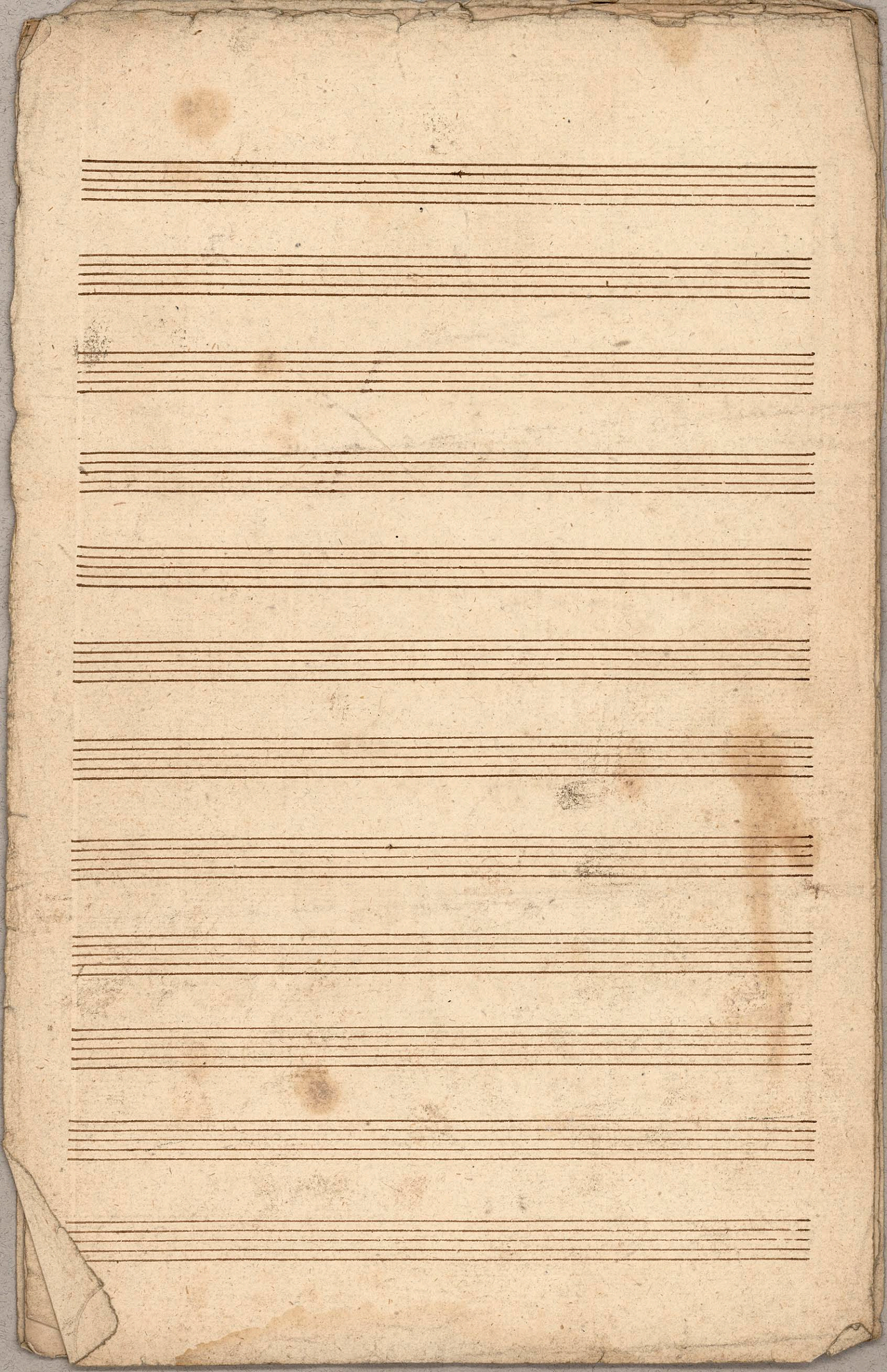
Handwritten musical score for Violino 1^{mo}, titled "Entrée". The score consists of ten staves of music, each beginning with a treble clef and a key signature of one sharp (F#). The notation includes various rhythmic values, slurs, and dynamic markings such as *ff* and *ffo*. The music is written in a cursive, historical style. The final staff concludes with a double bar line and a fermata-like flourish.





Violino 2^{do}
Cresc.

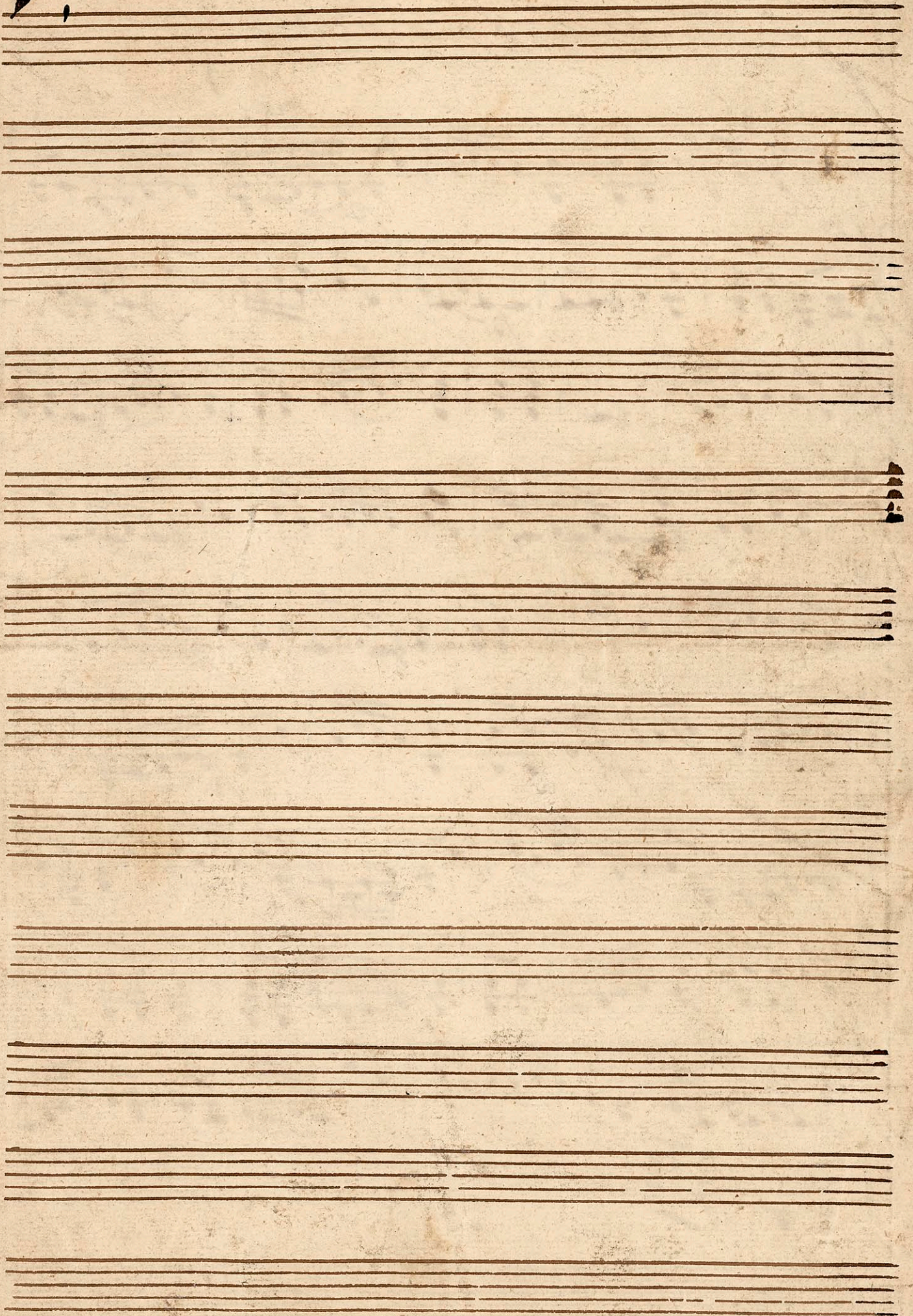




Violino Solo

Entrée

A handwritten musical score for a violin solo. The score is written on 12 staves. The key signature is one sharp (F#), and the time signature is 4/4. The music is characterized by rapid sixteenth-note passages and dynamic markings such as *ff* and *ff*. The notation includes various note values, rests, and slurs. The paper shows signs of age, with some staining and wear.



Entrée i det wærdede mode

Prologo 2da



Alla $\frac{3}{4}$ #2

Viola

Entrée



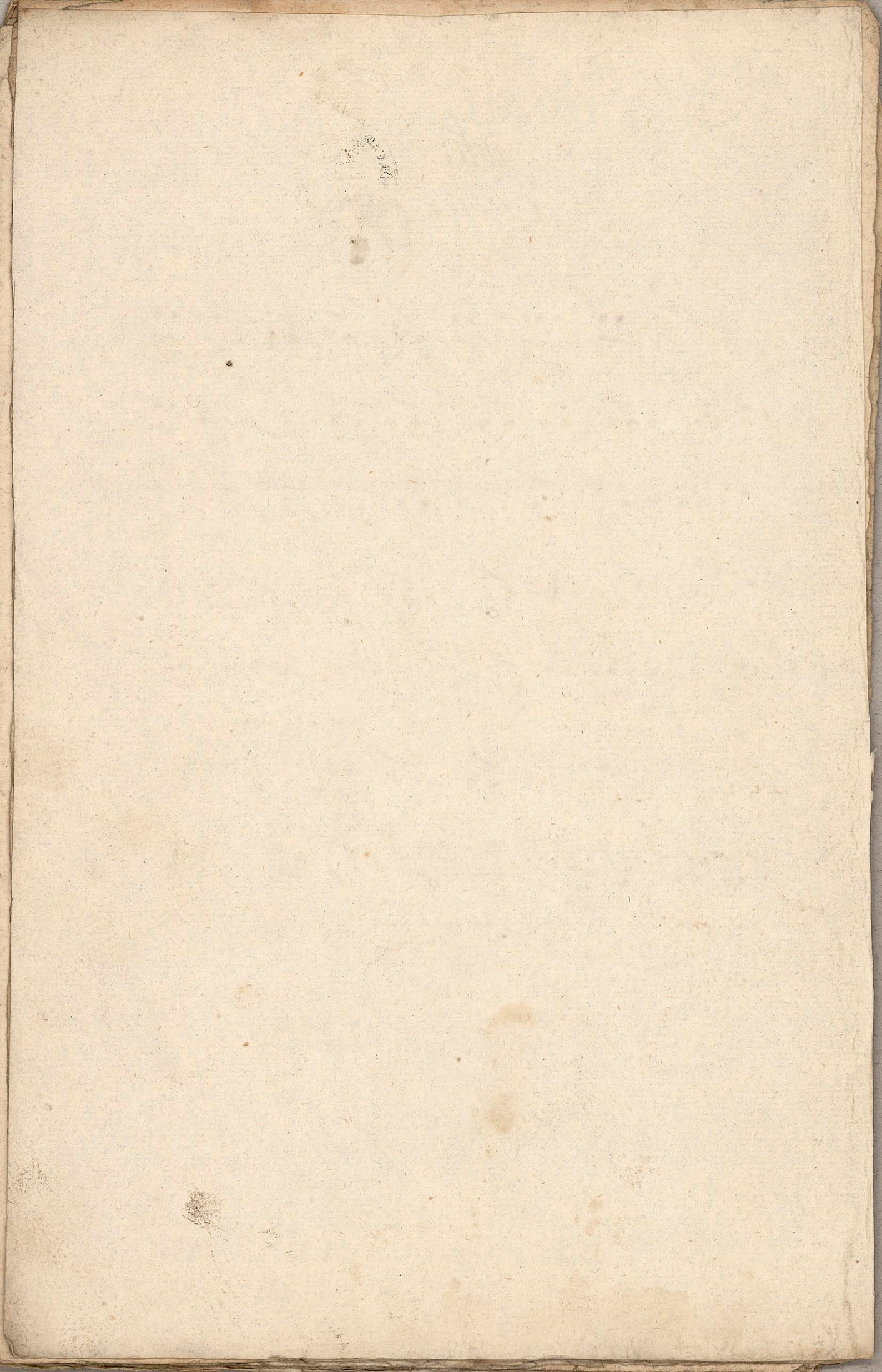
Handwritten musical score for Viola, titled "Entrée". The score is written on ten staves, with the first eight staves containing musical notation. The notation includes a key signature of one sharp (F#) and a time signature of 2/4. The music is written in a cursive style, with various notes, rests, and dynamic markings such as *f* and *pp*. The score concludes with a double bar line and repeat signs on the eighth staff. The bottom two staves are empty.



Viola
Entrée



Handwritten musical score for Viola Entrée, consisting of seven staves. The music is written in G major (one sharp) and 2/4 time. The score includes various musical notations such as notes, rests, dynamics (p, f), and a repeat sign. The first staff begins with a treble clef, a key signature of one sharp (F#), and a 2/4 time signature. The music concludes with a double bar line and repeat dots on the seventh staff.



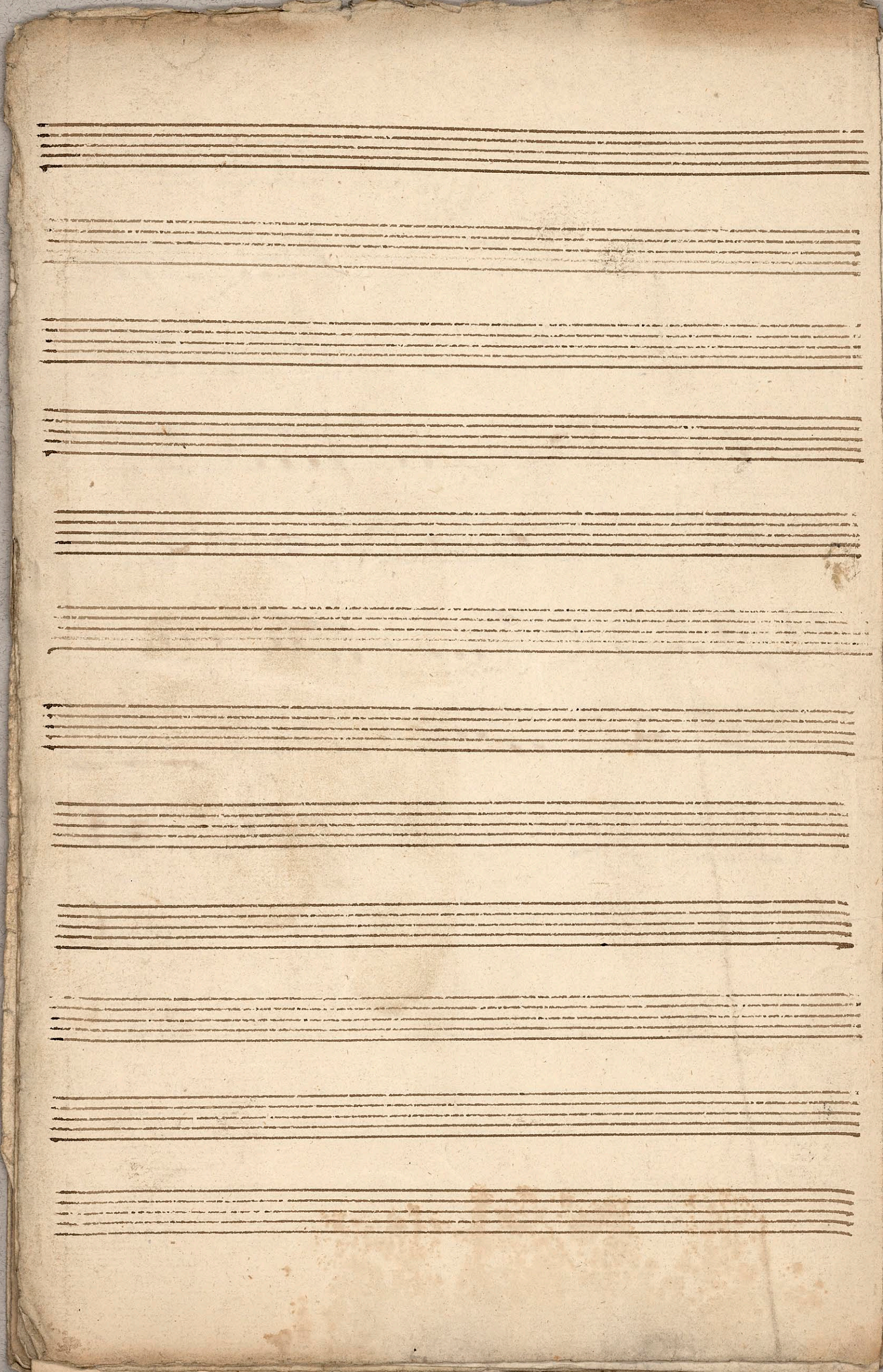
Contre Bass

Contre Bass



Handwritten musical score for Contre Bass, consisting of seven staves of music. The notation includes various note values, rests, and dynamic markings such as *p* and *f*. The music is written in a historical style with a treble clef and a key signature of one sharp (F#).

Four empty musical staves at the bottom of the page, providing space for further notation.

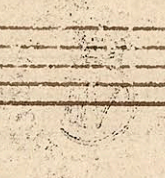


Contre Bas
Contre



Handwritten musical score for 'Contre Bas' and 'Contre'. The score consists of eight staves of music, each beginning with a treble clef, a key signature of one sharp (F#), and a common time signature (C). The notation includes various note values, rests, and bar lines. The ink is brown and the paper shows signs of age and wear.

Four empty musical staves at the bottom of the page, consisting of five-line systems without any notation.



Flauto 1.

N. 1. *tace.*

N. 2. 3. 4. *tace*

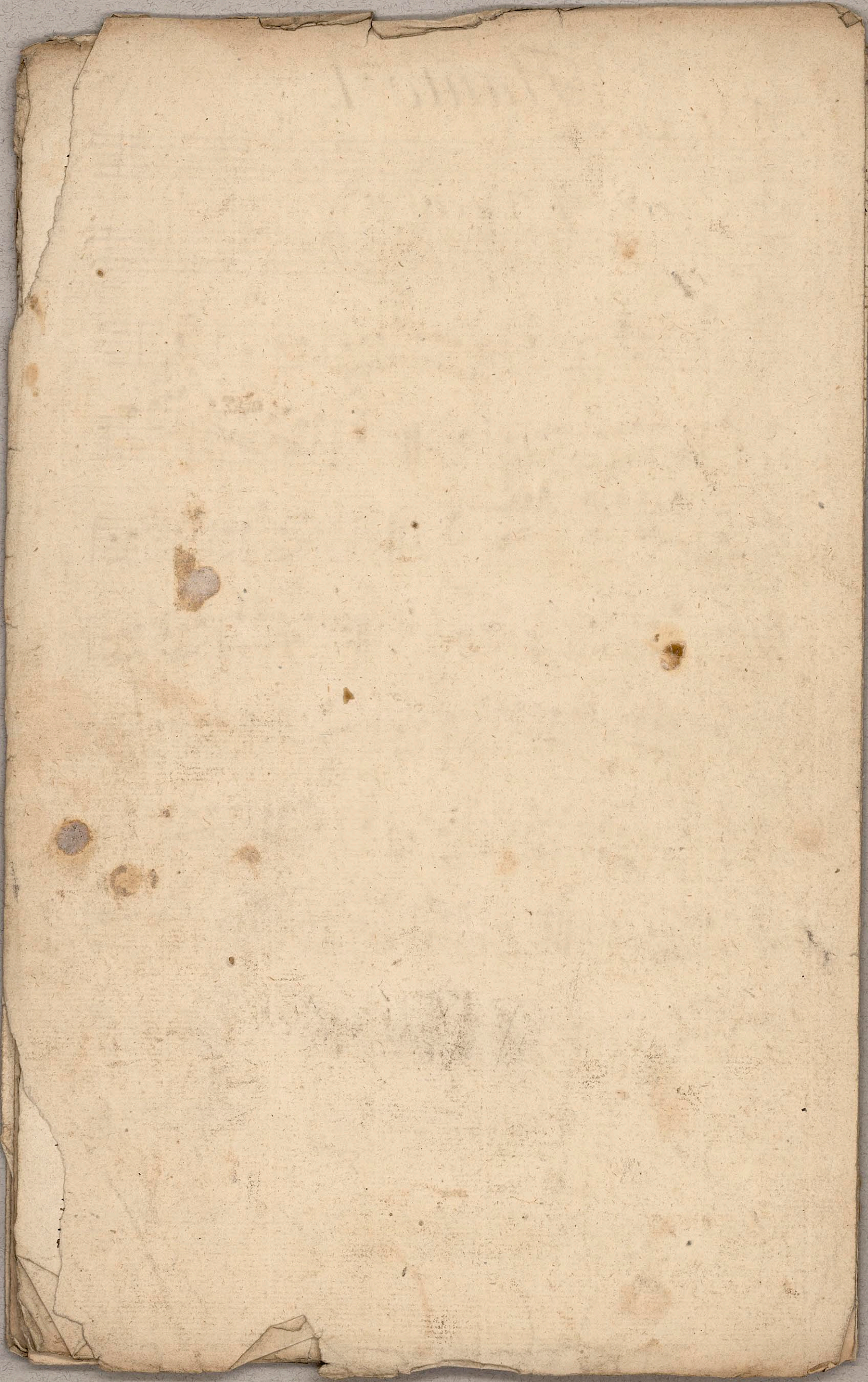


N. 5.

Handwritten musical score for Flute No. 5. The piece is in G major (one sharp) and 2/4 time. It consists of five staves of music. The notation includes various rhythmic values, slurs, and dynamic markings such as "2." (second ending). The piece concludes with a double bar line and the instruction "Da Capo." written in cursive.

N. 6.

Handwritten musical score for Flute No. 6. The piece is in G major (one sharp) and 2/4 time. It consists of three staves of music. The notation includes various rhythmic values, slurs, and dynamic markings such as "2." (second ending). The piece concludes with a double bar line and the instruction "Da Capo N. 6" written in cursive.



Flauto 2.

N. 1 *tace.*

N. 2. 3 4 *tace*



N. 5.

Musical score for Flute 2, measures 1-5. The score is written on five staves. The first staff begins with a treble clef, a key signature of one sharp (F#), and a 2/4 time signature. The music consists of eighth and sixteenth notes, with some slurs and accents. The word 'Lalapo' is written in cursive at the end of the fifth staff.

Musical score for Flute 2, measures 6-8. The score is written on three staves. The first staff begins with a treble clef, a key signature of one sharp (F#), and a 2/4 time signature. The music continues with eighth and sixteenth notes, including slurs and accents. The word 'Lalapo' is written in cursive at the end of the second staff.

Faded musical score for Flute 2, measures 9-12. The score is written on four staves, but the notes and markings are very light and difficult to read. It appears to be a continuation of the previous section.

