

PETER HEISE

STRYGEKVARTET NR. 5 I A-DUR

STRING QUARTET NO. 5 IN A MAJOR

KØBENHAVN 2017



DANSK CENTER FOR MUSIKUDGIVELSE

Viola

STRYGEKVARTET NR. 5

i A-dur

STRING QUARTET NO. 5

in A major

I

Allegretto tranquillo

6

vl. 1

p

14

f *dim.*

22

pp *f*

28

ff *dim.*

35

sf

42

ff

47

sempre f

52

fz *p* *fz* *p* *p*

63

pp

2

6/8

Viola

Allegro vivace (♩ = ♩.)

73 pizz. **3** arco *p* *cresc.* *f*

82 *p*

90 *cresc.* *f*

97 *ff* *p* *p*

108 *p* *cresc.*

116 *p*

123 *f* *fz*

131 *fz* *f* *p*

143 *cresc.* *fp*

151

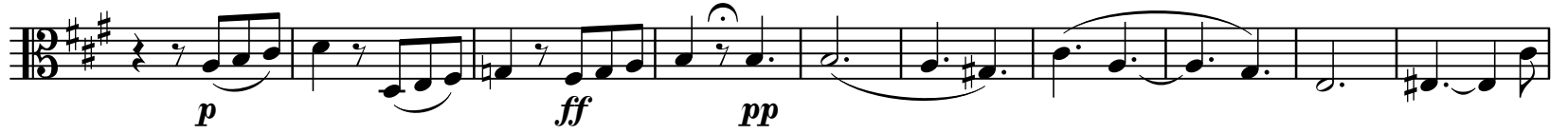
161 *cresc.* *fp* **3**

173 *p* *cresc.* *f*

184 *p* *ff* *p* *ff*

Viola

193



203



213



222



230



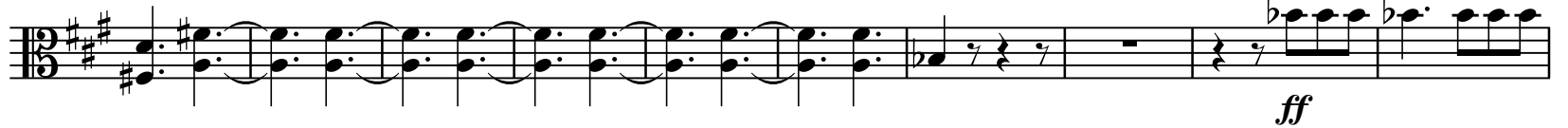
238



248



257



267



274



284



291



304



Viola

316 pizz. **3** arco *p* *cresc.* *f*

325 *mf* *cresc.*

333

340 *ff* *p*

349

356

362 *cresc.*

368

376 *cresc.*

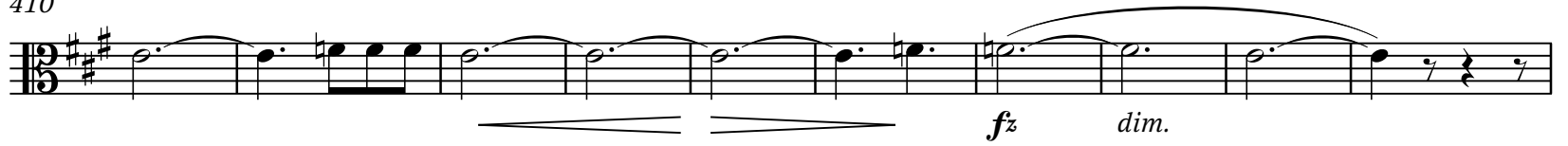
384 *dim.* *pp*

394 *fp*

402 *f*

Viola

410



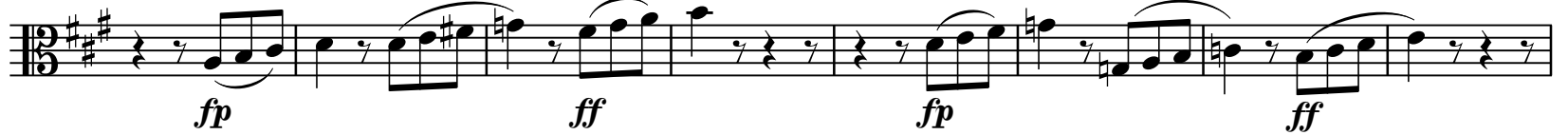
420



428



436



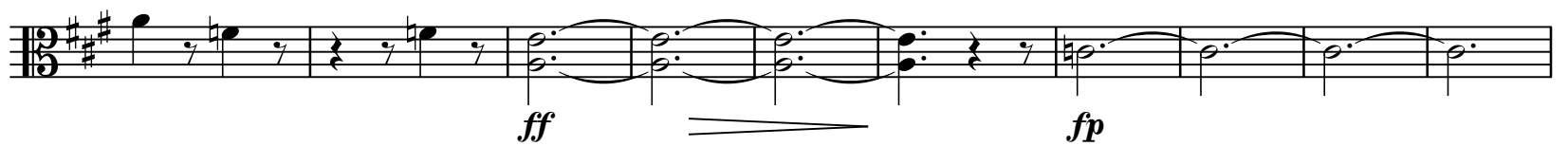
444



451



458



468



Maestoso (♩. = ♩)

482



488

Allegro. Doppio movimento



494



Viola

II

Andantino sostenuto

12

mf *dim.* *p* *fz* *p*

22

f *dim.*

29

p

37

f *f* *f*

47

f *f* *f*

57

f

65

ff

75

p *p* *cresc.* *f*

86

p

94

f *f* *f* *f* *f*

100

p *f* *f* *dim.* *pp*

Viola

109



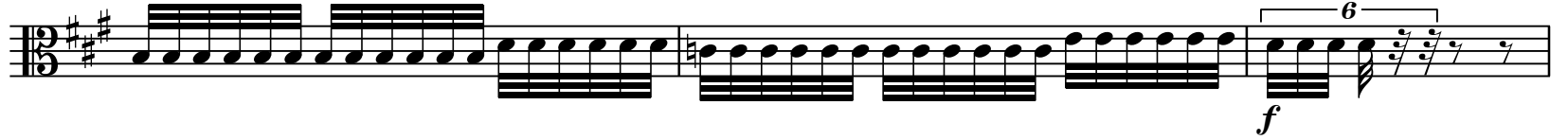
116



121



126



129



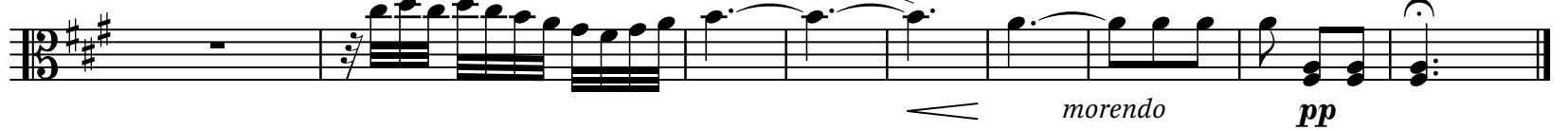
132



137



146



III

Vivace

10

Viola

127



136



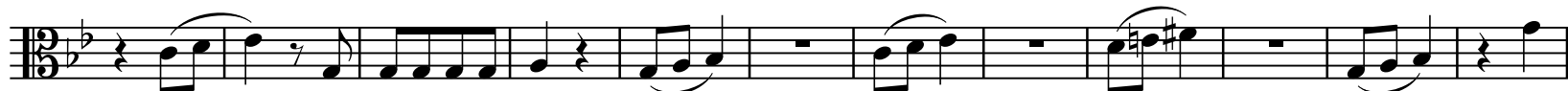
149



161



173



185



198



212



225



236



248



262



Viola

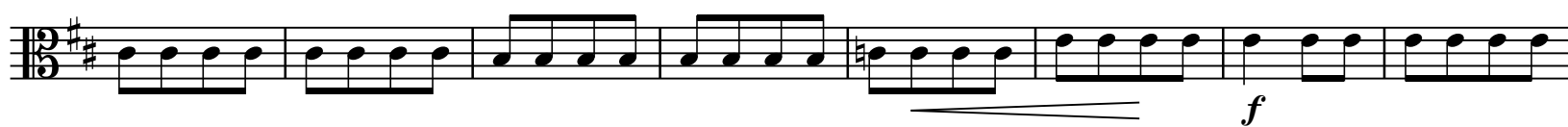
273



282



291



299



307



316



324



333



341



349



359



366



Viola

377



389



397



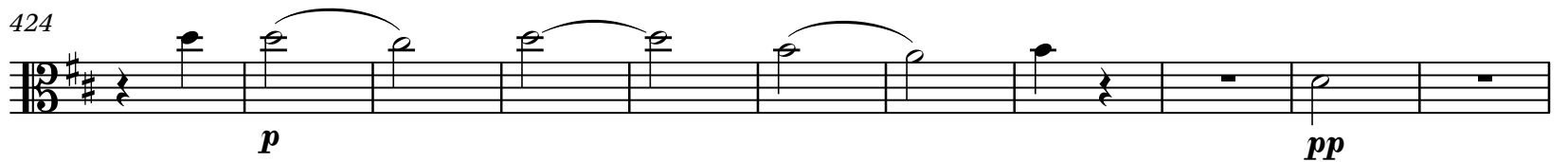
405



414



424



435



446



Viola

Viola

IV

FINALE

Adagio, quasi Fantasia

10 *fp* *p* *f* *pp* *3*

16 *cresc.* *p* *p*

24 *3* *3* *3* *3* *f* *dim.*

33 *pp*

42 Allegro energico, ma non troppo presto

42 *cresc.* *f*

48 *p*

53 *f*

57 *p* *f*

62

67 *f*

72 *ff*

77

Viola

84

89

92

96

99

105

111

116

123

130

137

Viola

142 *cresc.* *f*

146 *fz* *fz* *fz* *fz*

151

156 *fp*

162 *f*

168

174 *p*

180 *f* *sf* *sf*

185 *p*

190 *f* *sf* *sf*

195 *f* 2

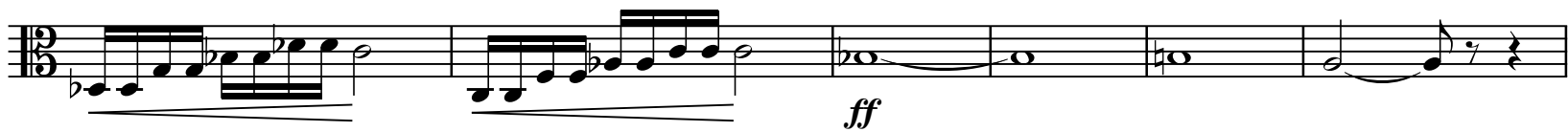
The musical score for Viola spans measures 142 to 195. It begins with a crescendo leading to a fortissimo (f) section. Measures 146-150 feature fortissimo-zitig (fz) dynamics. Measure 156 is marked fortissimo-pizzicato (fp). Measures 162-167 are fortissimo (f). Measures 168-173 are piano (p). Measures 174-179 are piano (p). Measures 180-184 are fortissimo (f) and sforzando (sf). Measures 185-189 are piano (p). Measures 190-194 are fortissimo (f) and sforzando (sf). Measure 195 is fortissimo (f) and ends with a repeat sign.

Viola

201



205



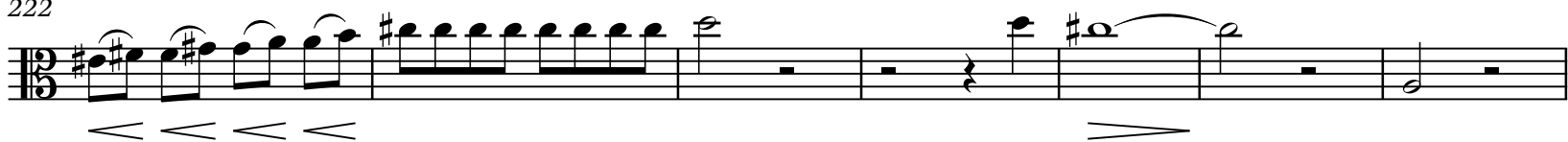
211



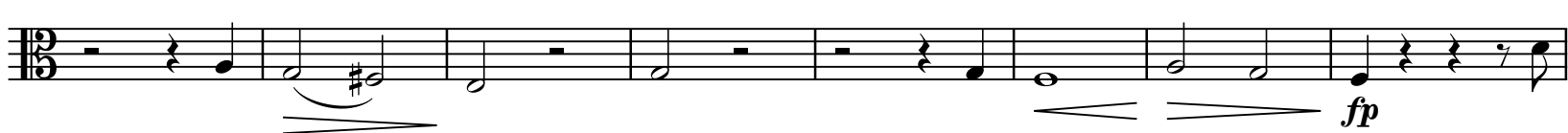
217



222



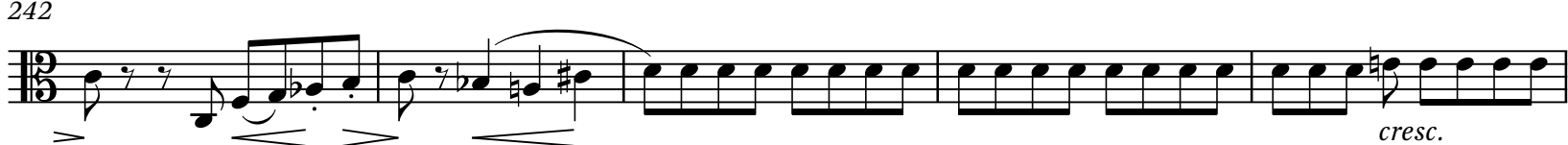
229



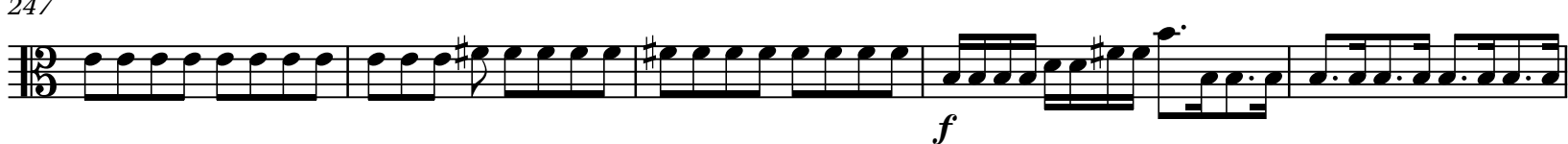
237



242



247



252



256



261



266



Viola

271



276



280



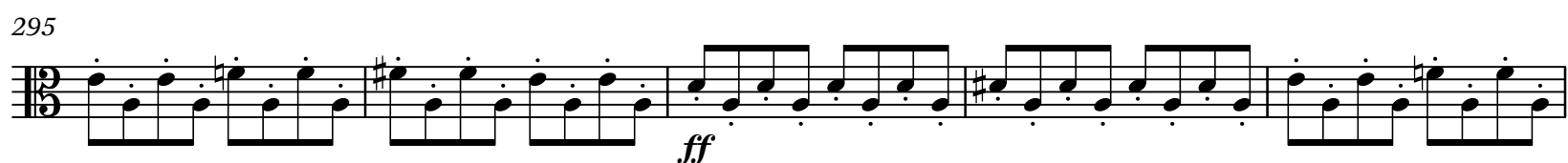
285



289



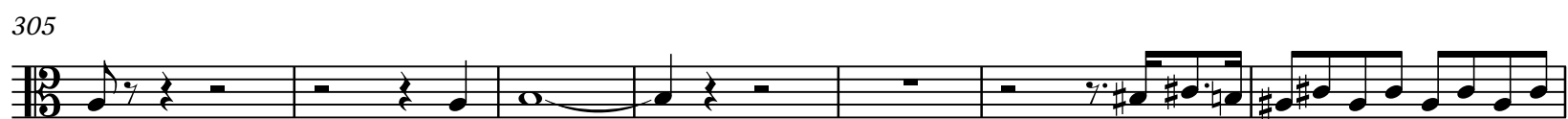
295



300



305



312



316



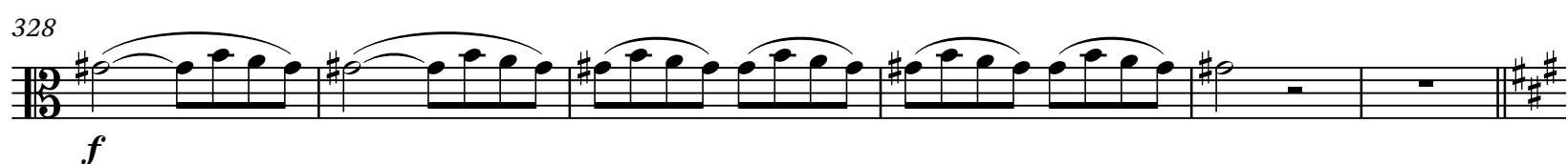
319



322



328



Viola

334

334

p

340

340

This musical score segment contains measures 340 through 343. The key signature is D major (two sharps). The time signature is 3/8. The vocal line begins in measure 340 with a half note D4, followed by quarter notes E4, F#4, and G4. In measure 341, there is a half note A4 with an accent (^) and a slur over the next two notes, B4 and C5. Measure 342 features a half note D5, followed by quarter notes C5 and B4. Measure 343 starts with a half note A4, followed by quarter notes G4 and F#4. The piano accompaniment consists of chords: D4-F#4 in measure 340, D4-F#4-A4 in measure 341, D4-F#4-A4 in measure 342, and D4-F#4-A4 in measure 343. There are fermatas over the piano chords in measures 340, 342, and 343.

348

[illegible]

353

353

The musical notation for exercise 353 is written on a single staff. It begins with a treble clef, a key signature of two sharps (F# and C#), and a 3/8 time signature. The melody is composed of eighth notes, with each measure containing three eighth notes. The notes are: F#4, A4, B4 in the first measure; C#5, D5, E5 in the second measure; F#5, G5, A5 in the third measure; and B5, C#6, D6 in the fourth measure. A long, thin, curved line is drawn below the staff, spanning the entire length of the four measures.

356

356

Example 10-10

361

361

This block contains measures 361 through 364 of the musical score. Measure 361 features a vocal line with a half note G4, a quarter note A4, and a half note B4, followed by a quarter rest. The piano accompaniment consists of a half note G3, a quarter note A3, and a half note B3. Measure 362 has a vocal line with a half note C5, a quarter note B4, and a half note A4, followed by a quarter rest. The piano accompaniment consists of a half note C4, a quarter note D4, and a half note E4. Measure 363 has a vocal line with a half note G4, a quarter note A4, and a half note B4, followed by a quarter rest. The piano accompaniment consists of a half note G3, a quarter note A3, and a half note B3. Measure 364 has a vocal line with a half note C5, a quarter note B4, and a half note A4, followed by a quarter rest. The piano accompaniment consists of a half note C4, a quarter note D4, and a half note E4.

366

366

ff

369

369

369

372

372

372

375

375

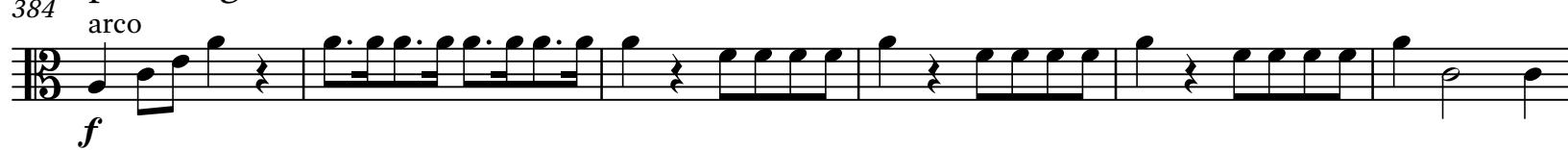
This block contains measures 375 through 380 of the musical score. The music is in 3/8 time with a key signature of two sharps (F# and C#). The vocal line continues with a melodic phrase in measure 375, followed by a rest in measure 376. The piano accompaniment features a steady eighth-note pattern in the right hand and a more complex rhythmic pattern in the left hand, including some triplets. The piece concludes in measure 380 with a final chord and a fermata over the vocal line.

378

[illegible]

Viola

384 *più allegro*



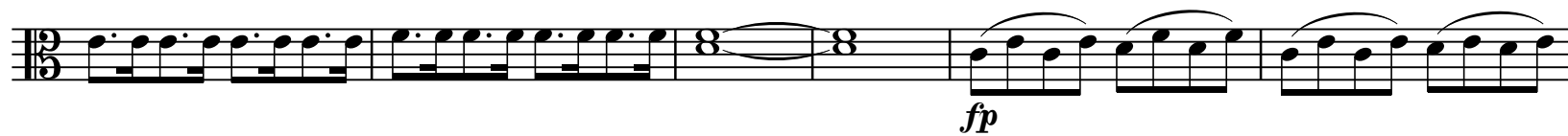
390



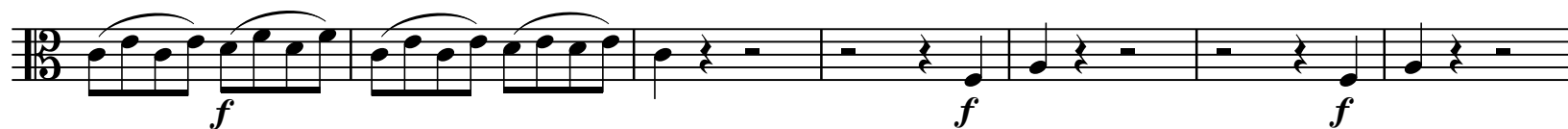
396



401



407



414

